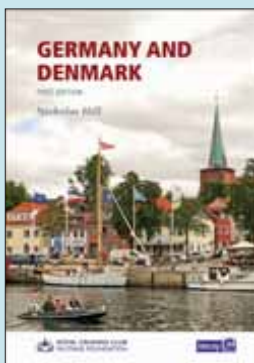


# Charts, books and digital CATALOGUE 2022



## Imray charts - designed for small craft

Imray charts are the first port of call for the leisure sector with award-winning cartography.

### Official data PLUS Imray small craft information

Based on up-to-date official surveys, we add unique Imray data sourced from across our networks and from our carefully researched cruising guide.

### The latest information

Our charts receive continual attention and amendment by skilled staff to ensure that they are always as current as possible.

### Intuitive colour scheme

Deep water is dark blue, shallower areas are paler, land is green, sand and drying patches are yellow.

### Lights and buoys

Shown in their intended colours.

### Land features

Included to help with navigation.

### Fine latitude and longitude grids

Help you plot your position

### Clear design

Enhances clarity, defining features of interest such as traffic separation schemes

### Standard symbols and abbreviations

International Hydrographic Organisation symbols and abbreviations included on Imray charts are those that you'd learn on any sailing course.

### Weekly corrections and updates service

The information shown on charts is liable to constant change. We upload weekly Corrections notices to [www.imray.com](http://www.imray.com)

### Printing history

We produce our charts on state-of-the-art digital printing machines which enable us to issue more frequent new and updated editions.

### Water resistant paper

Imray charts are printed on matt water-resistant Pretex paper which allows plotting in a wide range of pencils or pens.

Imray charts are normally published to an approximately A4 folded format enclosed in a cover and supplied in robust recycled pvc wallets.

Flat and laminated sheets are available on request.

### Chart sheet sizes

*C charts*

787 x 1118mm (31" x 44")

Small format Y charts  
420mm x 560mm (A2)

*All other charts*

640mm x 900mm (25" x 35½")

Chart packs are A2 format and printed on strong cartridge paper.

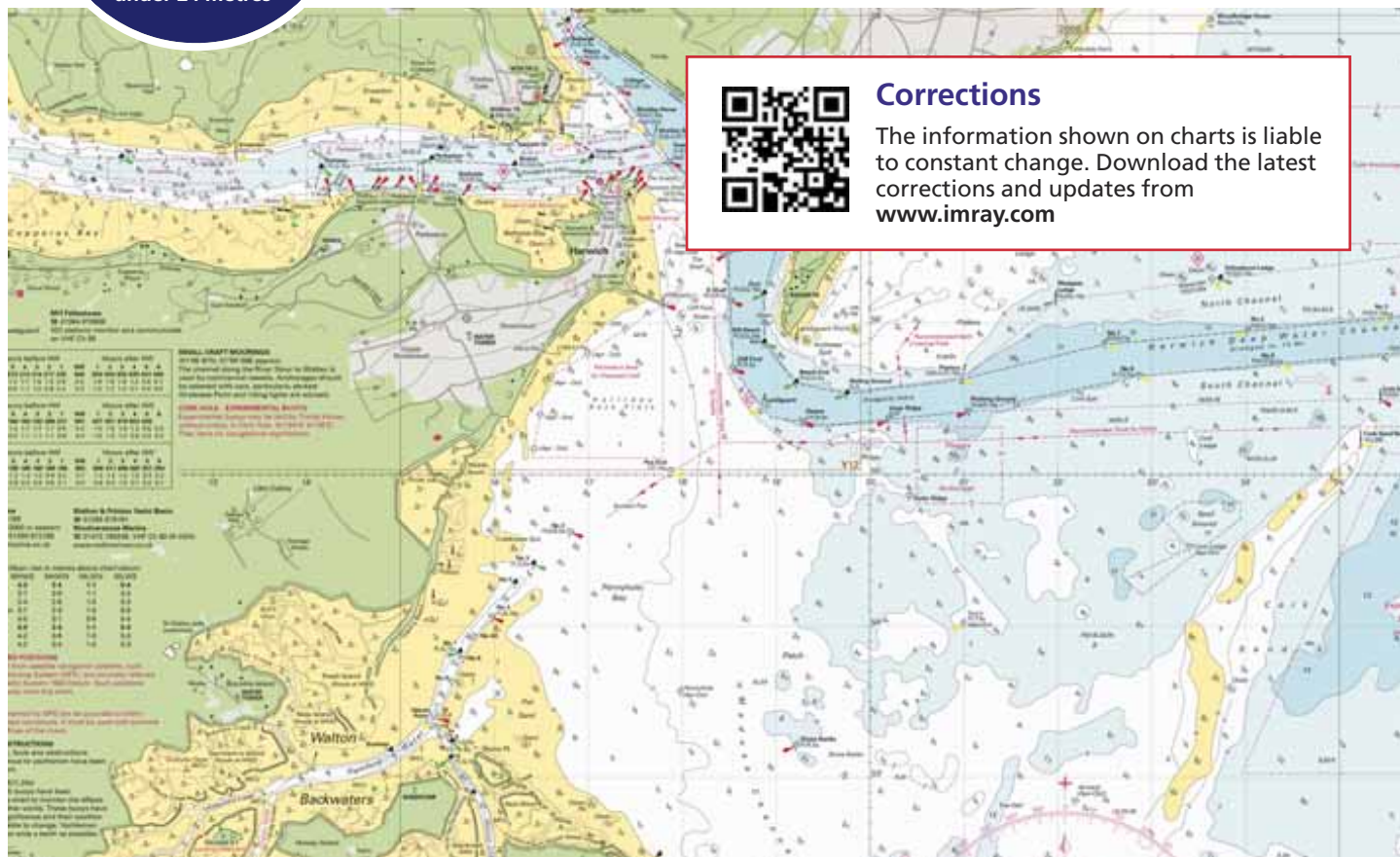
### Datum

All Imray charts are now based on WGS 84 datum as indicated in the catalogue. Apart from some of the Imray-Iolaire charts of the Caribbean Sea, all are metric.

Every chart includes details of the datum and projection on which it was based, to allow it to be used safely with satellite navigation systems.

**Maritime and Coastguard Agency Recognised**

Imray charts are approved for use on most yachts and motor boats under 24 metres





## Imray chart packs - includes mobile download

This range of small format charts is designed for use on small chart tables and in open cockpits.

Each pack consists of a series of charts, each designed and edited to provide perfect coverage. Within each pack are small and medium scale passage charts as well as larger scale harbour plans and inset plans. Where appropriate cross-Channel and cross-North Sea charts are included to assist approaches.

Imray Digital Charts for use on our Imray Navigator app are included.

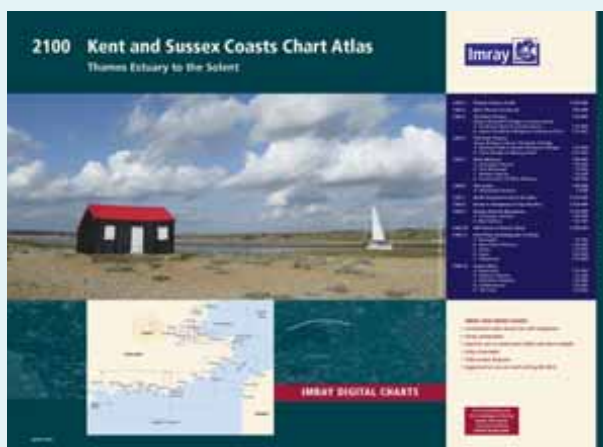
This range is being revised and expanded to include the Mediterranean and beyond.

- Size A2 594 X 420mm
- Printed on strong cartridge paper
- Charts in many of the sets are also available separately as Y charts, either as folded to A4 in a wallet or flat laminated. Full details of the charts in each pack and which of these is separately available are given in the the stock list and at [www.imray.com](http://www.imray.com).
- Available as spiral-bound atlases or loose leaf packs. See [www.imray.com](http://www.imray.com) for details.
- Excellent value

## Print on demand charts

Imray is an authorised print on demand supplier for official charts from the Admiralty, Norwegian Hydrographic Office and SHOM (France). This means that the charts are updated to include corrections on the most recent Notices for Mariners (Efs) and printed on request. We are able to fulfil these orders quickly.

See [www.imray.com](http://www.imray.com) for more information.



**NEW**

**2100**

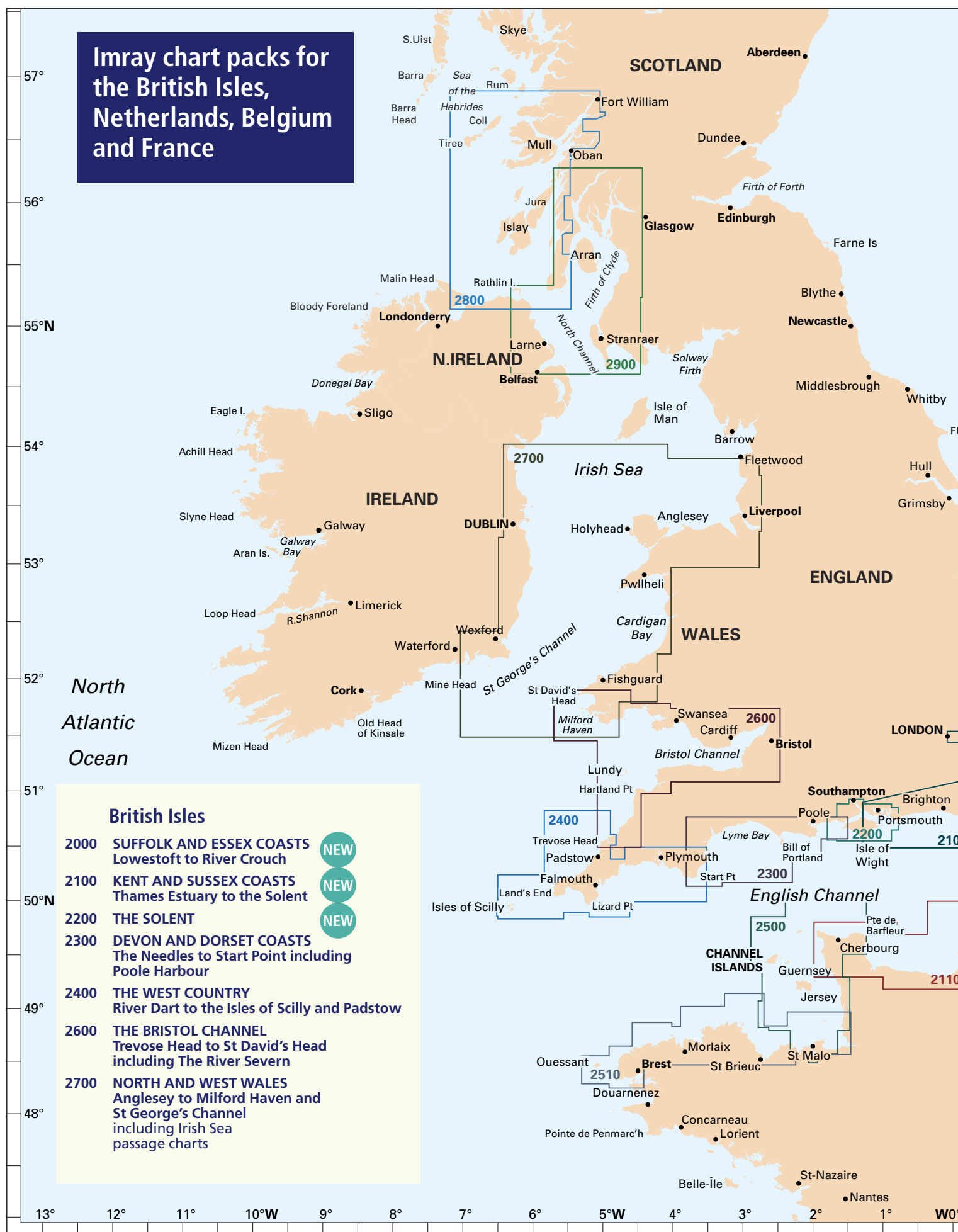
**KENT AND SUSSEX COASTS**

Thames Estuary to the Solent  
17 sheets

This fully revised and extended edition of our 2100 chart pack now includes more detailed coverage and comes as a paper and digital edition.



**NEW**



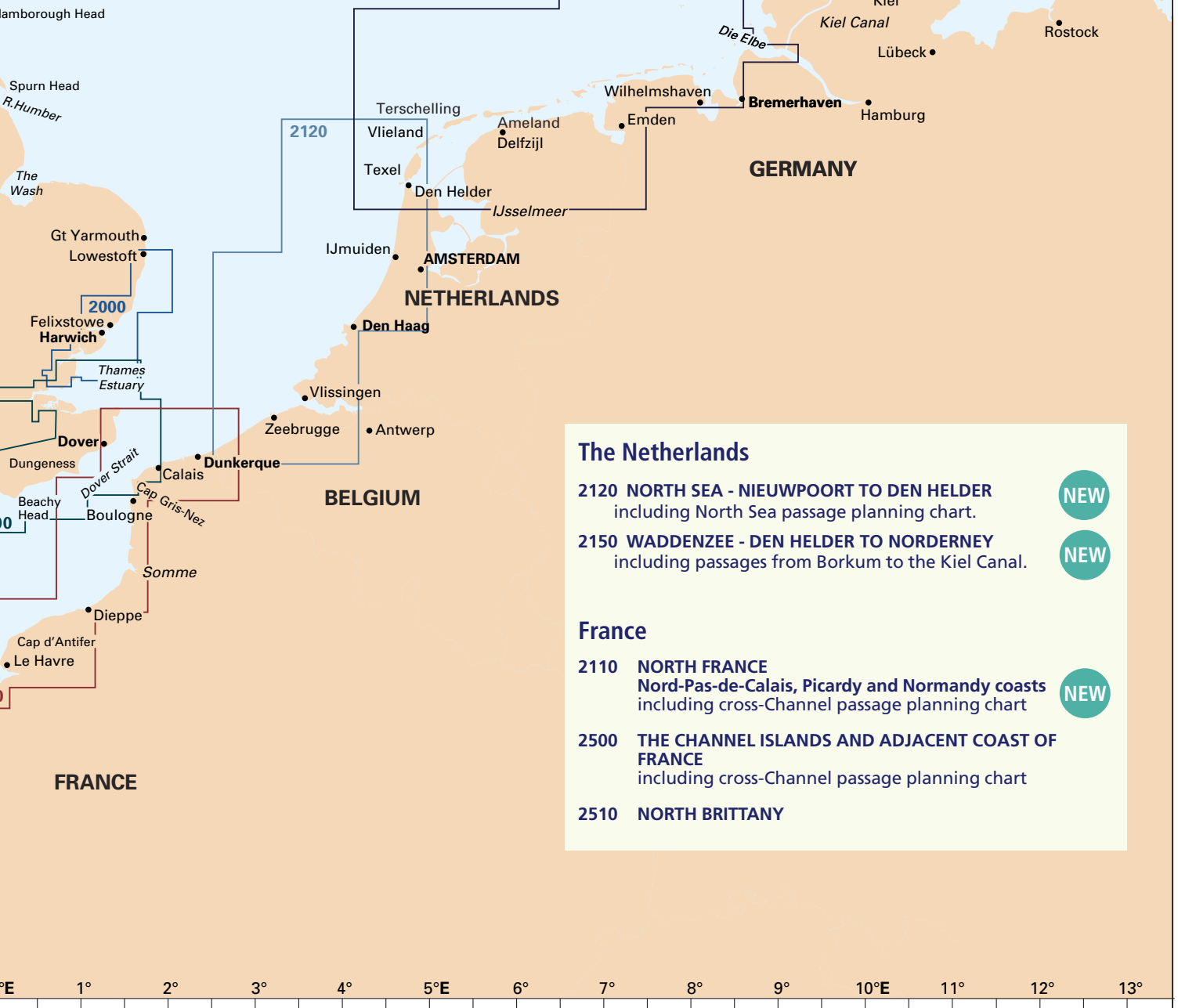
## Scotland

Coverage for Scotland has been completely redesigned in association with Clyde Cruising Club. It now includes more detailed coverage of the area and comes as a paper plus digital edition

**2800 KINTYRE TO ARDNAMURCHAN**

**2900 FIRTH OF CLYDE**  
including passages to Northern Ireland

NEW



## The Netherlands

**2120 NORTH SEA - NIEUWPOORT TO DEN HELDER**  
including North Sea passage planning chart.

NEW

**2150 WADDENZEE - DEN HELDER TO NORDERNEY**  
including passages from Borkum to the Kiel Canal.

NEW

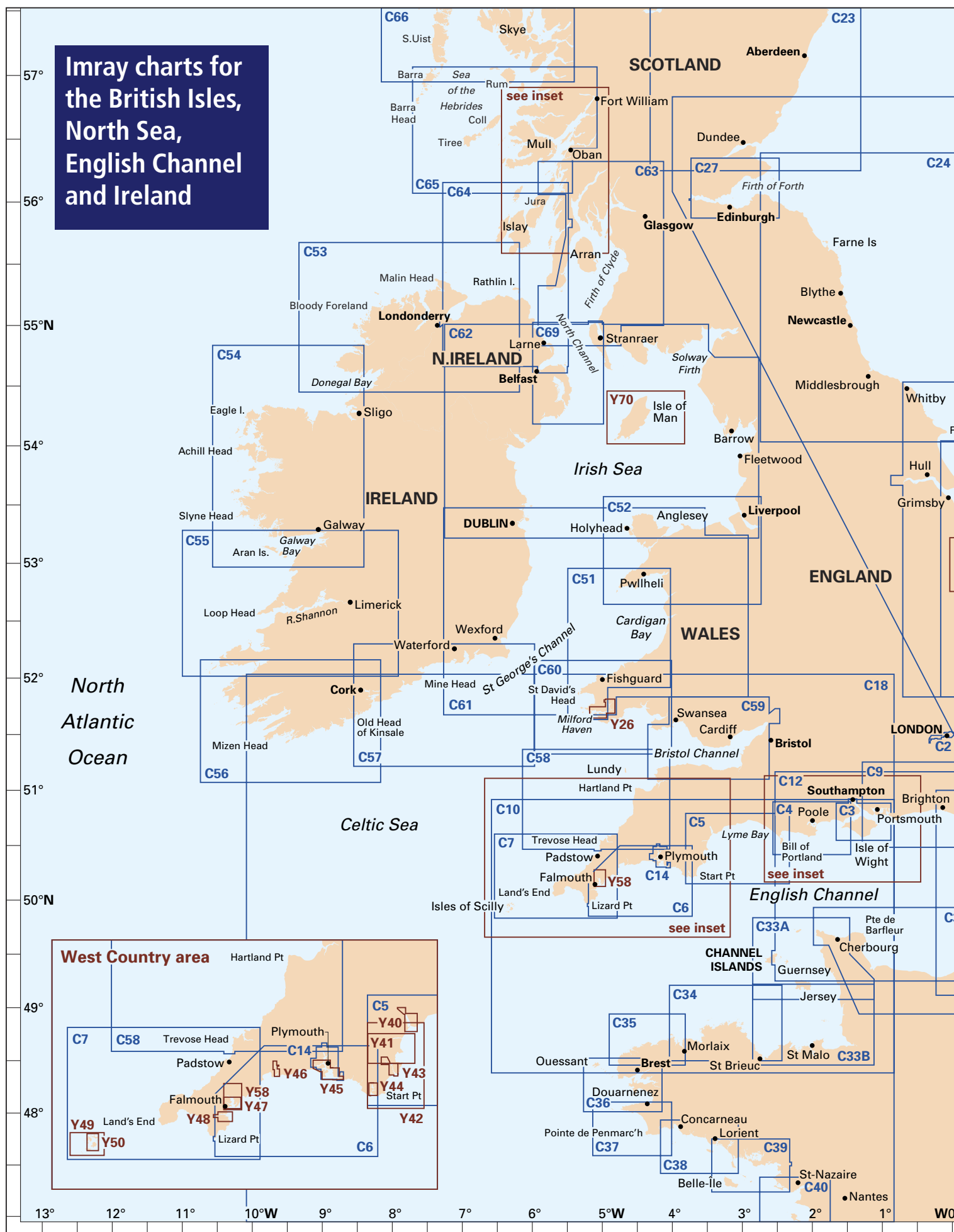
## France

**2110 NORTH FRANCE**  
Nord-Pas-de-Calais, Picardy and Normandy coasts  
including cross-Channel passage planning chart

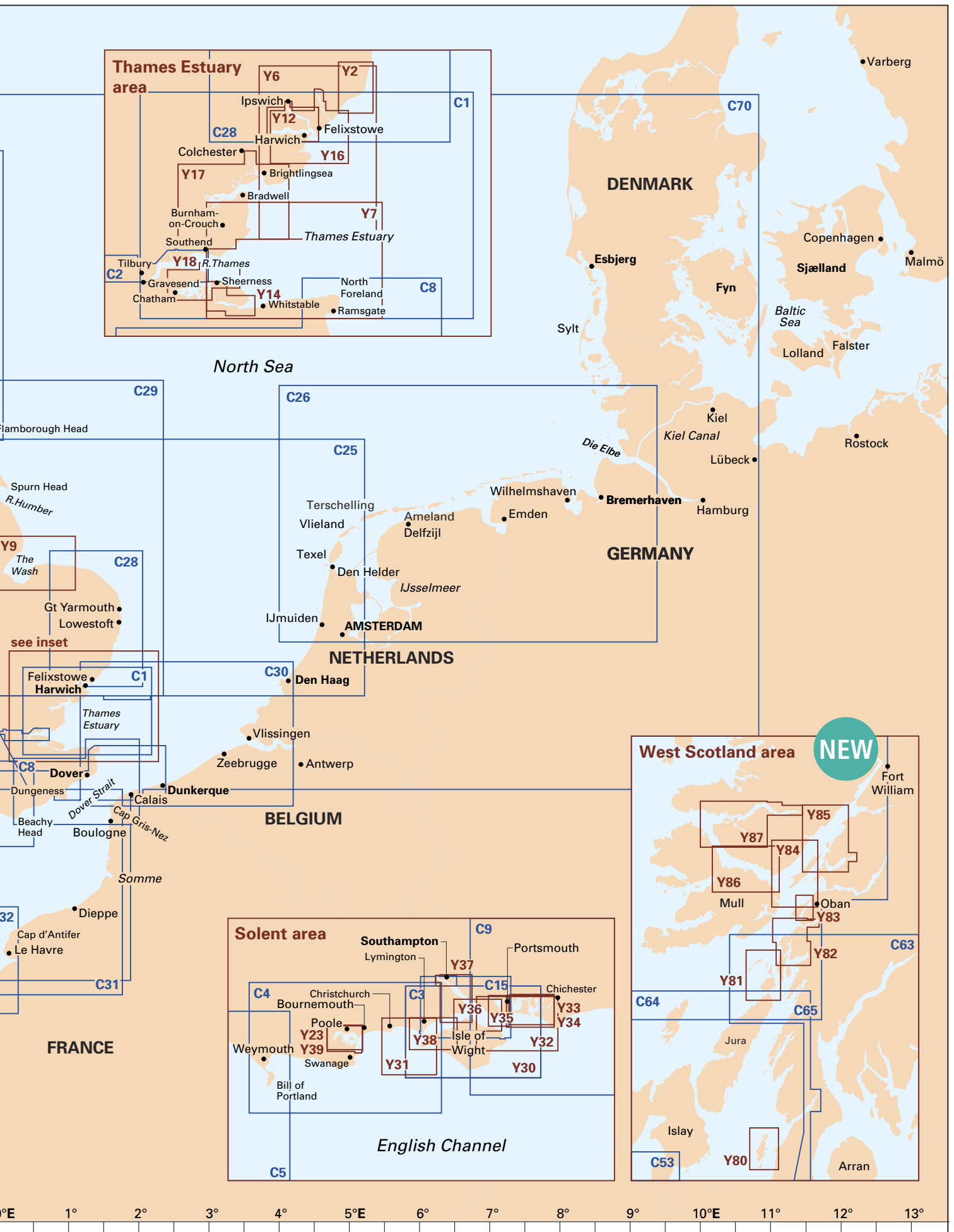
NEW

**2500 THE CHANNEL ISLANDS AND ADJACENT COAST OF FRANCE**  
including cross-Channel passage planning chart

**2510 NORTH BRITTANY**







## C Charts - full size charts

A full range of charts for passage planning and coastal sailing with inset plans detailing harbours and estuaries at larger scales. Printed on water-resistant Pretex® paper, supplied folded to A4 size in a recycled plastic wallet. Also available laminated.

### C1 Thames Estuary - Tilbury to North Foreland and Orfordness

1: 120 000 WGS 84

### C2 The River Thames - Teddington to Southend

Various WGS 84

*Plans* Gallions Point Marina, South Dock Marina, Limehouse Basin Marina, St Katharine Docks, Chelsea Harbour Marina, Brentford Dock Marina, Richmond Bridge to Vauxhall Bridge, Vauxhall Bridge to Barking Creek, Barking Creek to Southend, Continuation to Teddington

### C3 Isle of Wight

1: 52 500 WGS 84

*Plans* Lymington River, River Hamble, Bembridge Harbour, Continuation of Southampton Water

### C4 Needles Channel to Bill of Portland

1: 75 000 WGS 84

*Plans* Portland Harbour, Weymouth Harbour, Lulworth Cove, Worbarrow Bay, Chapman's Pool, Swanage, Studland Bay, Christchurch, Continuation of River Stour

### C5 Bill of Portland to Salcombe Harbour

1: 100 000 WGS 84

*Plans* Bridport Harbour, Lyme Regis, Exmouth, Teignmouth Harbour, Torquay Harbour, Brixham Harbour, Tor Bay, River Dart Entrance

### C6 Salcombe to Lizard Point

1: 100 000 WGS 84

*Plans* Salcombe, Plymouth Sound, Looe, Polperro Harbour, Fowey Harbour and Approaches, Charlestown Harbour, Mevagissey Harbour, Falmouth Harbour

### C7 Falmouth to Isles of Scilly and Trevoze Head

1: 120 000 WGS 84

*Plans* Newquay Bay, Saint Ives, St Mary's Road, Hugh Town, Mousehole, Newlyn Harbour, Penzance, Saint Michael's Mount, Porthleven, Mullion Cove

### C8 Dover Strait - North Foreland to Beachy Head and Boulogne

1: 120 000 WGS 84

*Plans* Sovereign Harbour, Rye Harbour, Folkestone Harbour, Dover, River Stour Entrance, Ramsgate, Calais, Boulogne-sur-Mer

### C9 Beachy Head to the Isle of Wight

1: 120 000 WGS 84

*Plans* Eastern Approaches to the Solent, Littlehampton, Shoreham Harbour, Brighton Marina, Newhaven, Sovereign Harbour

### C10 Western English Channel - Passage Chart

1: 400 000 WGS 84

### C12 Eastern English Channel - Passage Chart

1: 300 000 WGS 84

*Plans* Dover Strait

### C14 Plymouth Harbour and Rivers

1: 20 000 WGS 84

*Plans* Plymouth, Mayflower Marina, Sutton Harbour and Queen Anne's Battery Marina, River Yealm, Continuation of Saint Germans or Lynher River, Continuation of River Tamar

### C15 The Solent - Bembridge to Hurst Point & Southampton

1: 35 000 WGS 84

*Plans* River Hamble, River Itchen, Hythe Marina Village, Lymington River, Newtown River, Bembridge Harbour, Beaulieu River, Continuation of Beaulieu River, Cowes Harbour, Yarmouth Harbour, Wootton Creek

### C18 Western Approaches to the English Channel & Bay of Biscay - Passage Chart

1: 1 000 000 WGS 84

### C19 A Coruña to Gibraltar - Passage Chart

1: 825 000 WGS 84

*Plans* A Coruña, Baiona, Leixões, Lisboa Approaches, Cascais, Sines, Lagos, Bahía de Cádiz, Rota, Strait of Gibraltar, Gibraltar

### C20 Strait of Gibraltar to Archipelago dos Açores & Islas Canarias - Passage Chart

1: 2 500 000 WGS 84

### C23 Fife Ness to Moray Firth

1: 250 000 WGS 84

*Plans* Wick Bay, Helmsdale, Inverness Firth, Nairn, Burghead, Hopeman, Lossiemouth, Buckie, Banff & Macduff, Fraserburgh, Peterhead, Aberdeen, Stonehaven, Montrose, Arbroath, Inverness

### C24 Flamborough Head to Fife Ness

1: 250 000 WGS 84

*Plans* Eyemouth Harbour, Berwick Harbour, Holy Island Hbr, Farne Islands, Warkworth Harbour (Amble) & Approaches, Blyth Harbour, River Tyne, Continuation of the River Tyne, River Tyne - Further continuation to Newcastle, Sunderland Harbour, Seaham Harbour, Hartlepool, River Tees, Whitby

### C25 Harwich to River Humber and Holland - Passage Chart

1: 340 000 WGS 84

*Plans* Oudeschild, Den Helder, IJmuiden, Scheveningen

### C26 IJmuiden to Die Elbe - Passage Chart

1: 345 000 WGS 84

*Plans* IJmuiden, Den Helder, West-Terschelling, Lauwersoog, Borkum Yacht Harbour, Norderney Approaches, Helgoland, Cuxhaven, Brunsbüttel

### C27 Firth of Forth

1: 75 000 WGS 84

*Plans* St Andrews, Crail, Anstruther, St

Monans, Elie, Methil Docks, Pettycur & Kinghorn, Inchkeith, Burntisland, Aberdour, Inchcolm, Dalgety Bay, Inverkeithing, North Queensferry & Port Edgar, Charlestown & Limekilns, Grangemouth & Entrance to River Carron, Continuation to Forth & Clyde Canal Entrance, Granton, Fisherrow, North Berwick, Dunbar

### C28 Harwich to Wells-next-the-Sea

1: 125 000 WGS 84

*Plans* Wells-next-the-Sea, Blakeney Harbour, Gt Yarmouth Haven, Lowestoft Approaches, Southwold Harbour, Rivers Ore and Alde, River Deben, Lowestoft Harbour

### C29 Harwich to Whitby

1: 285 000 WGS 84

*Plans* Whitby, Scarborough, Filey, Bridlington, River Humber, River Humber - Continuation to Goole, Hull Marina, Grimsby

### C30 Harwich to Hoek van Holland and Dover Strait

1: 200 000 WGS 84

*Plans* Dunkerque, Nieuwpoort, Oostende, Blankenberge, Zeebrugge, Breskens, Vlissingen

### C31 Dover Strait to Le Havre

1: 200 000 WGS 84

*Plans* Sovereign Harbour, Boulogne-sur-Mer, Le Tréport, Dieppe, St-Valéry-en-Caux, Fécamp, Approaches to Le Havre & River Seine, Le Havre Yacht Harbour

### C32 Baie de Seine - Le Havre to Cherbourg

1: 155 000 WGS 84

*Plans* Le Havre Yacht Harbour, Honfleur, Deauville/Trouville, Dives-sur-Mer, Ouistreham, Courseulles-sur-Mer, Arromanches, Port-en-Bessin, Grandcamp-Maisy, Baie du Grand Vey, Saint-Vaast-La-Hougue, Barfleur, Cherbourg, Port Chanterey (Cherbourg)

### C33A Channel Islands

1: 120 000 WGS 84

*Plans* Alderney Harbour, Beaucette Marina, St Sampson Hbr, St Peter Port, Creux Harbour Approaches, Gorey, Omonville, Herm Harbour & Rosière Anchorage, Diélette, Carteret, Bays of Sark, Little Russel

### C33B Channel Islands and North Coast of France

1: 120 000 WGS 84

*Plans* St-Quay-Portrieux, Binic, Dahouët, Erquy, Saint-Cast-Le-Guildo, St-Malo Approaches, St-Malo, Granville, St Helier Approaches (Jersey), St Helier Harbour

### C34 Cap d'Erquy to Ile de Batz

1: 110 000 WGS 84

*Plans* Primel, Le Léguer, Trébeurden, Ploumanac'h, Anse de Perros, Perros-Guirec, Port-Blanc, Approaches to Rivière de Tréguier, Tréguier, Approaches to Rivière de Trieux and Paimpol, Port de la Corderie (Ile de Bréhat), Port Clos (Ile de Bréhat), Lézardrieux, Paimpol, St-Quay-Portrieux, Binic, Port du Légué, Dahouët

### C35 Baie de Morlaix to L'Aber-Ildut

1: 75 000 WGS 84

*Plans* L'Aber-Ildut, Argenton, Portsall, Approaches to L'Aber Wrac'h & L'Aber Benoît, Port du Pontusval, Moguëric, Roscoff, Port de Morlaix

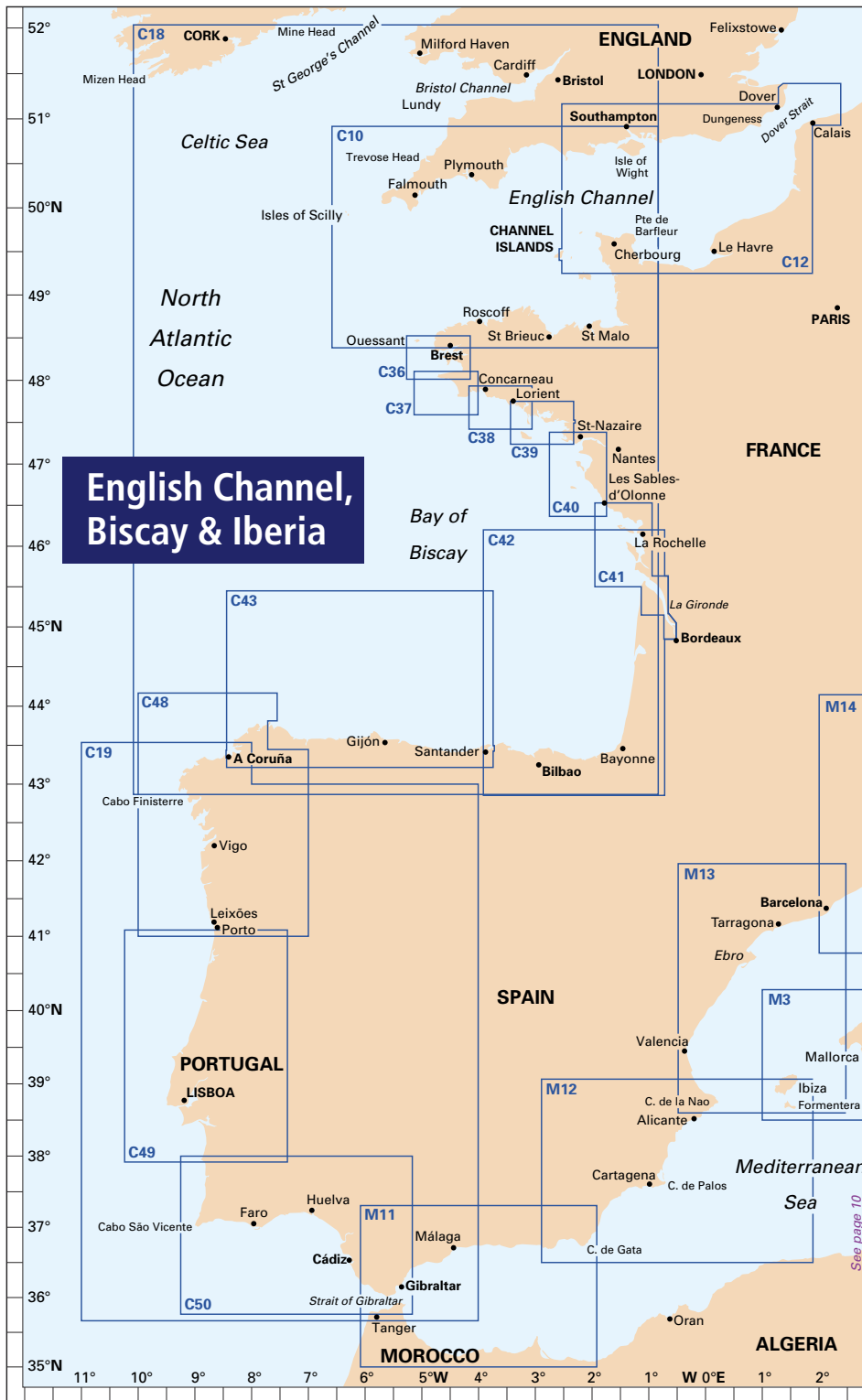
### C36 Île d'Ouessant to Raz de Sein

1: 80 000 WGS 84

*Plans* Baie de Lampaul (Ouessant), Port du Conquet, Port de Brest & Marina du Moulin Blanc, Marina du Moulin Blanc, L'Elorn - Continuation to Landerneau, Port de Camaret-sur-Mer, Port de Morgat, Port de Douarnenez







#### C37 Raz de Sein to Bénodet

1: 80 000 WGS 84

Plans Ile de Sein, Audierne, St Guénole, Le Guilvinec, Lesconil, Loctudy, Bénodet, L'Odet Fleuve

#### C38 Anse de Bénodet to Presqu'île de Quiberon

1: 80 000 WGS 84

Plans Port la Forêt, Concarneau, Port Manec'h, Ports Brigneau & Merrien, Doëlan, Îles de Glénan North, Lorient, Lorient Yacht Harbour, Port Tudy (Île de Groix), Étel

#### C39 Lorient to Le Croisic

1: 80 000 WGS 84

Plans Sauzon, Le Palais, Port Haliguen, La Trinité-Sur-Mer, Port Du Crouesty, Piriac-sur-Mer, La Turballe, Le Croisic, Baie de Pouliguen, Continuation of La Vilaine

#### C40 Le Croisic to Les Sables d'Olonne

1: 110 000 WGS 84

Plans Le Croisic, Saint-Nazaire, Pornic, L'Herbaudière, Goulet de Fromentine, Port-Joinville (Île d'Yeu), Port de Saint-Gilles-Croix-de-Vie, Les Sables d'Olonne

#### C41 Les Sables d'Olonne to La Gironde

1: 110 000 WGS 84

Plans Bourgenay, Approach to Jard-sur-Mer, Approach to Ars-en-Ré, Approach to St

Martin-de-Ré, Approach to La Flotte-en-Ré, Rade de la Pallice, La Rochelle and Port des Minimes, St-Denis-d'Oléron, Douhet, Boyardville, Rochefort, Royan, Port Médoc, La Gironde & La Garonne, Continuation to Bordeaux

#### C42 La Rochelle to Santander

1: 350 000 WGS 84

Plans Approach to Arcachon, Capbreton, Rada de Higue, Getaria, Zumaia, Abra de Bilbao, Laredo, Santoña, Santander, La Gironde & La Garonne, Continuation to Bordeaux

#### C43 Santander to A Coruña

1: 350 000 WGS 84

Plans Santander, Ribadesella, Gijón, Avilés, Luarca, Ribadeo, Ría de Viveiro, Ría de Cedeira, A Coruña to Rías de Ares and Betanzos

#### C48 A Coruña to Porto

1: 350 000 WGS 84

Plans A Coruña, Ría de Corme e Laxe, Ría de Camariñas, Ría de Muros, Approaches to Ría de Arousa, Ría de Arousa, Cabo de Cruz, Vilagarcía, Illa de Arousa to Cambados, Ría de Pontevedra, Ría de Vigo, Baiona, Viana do Castelo, Leixões, Barra do Rio Douro

#### C49 Ría de Aveiro to Sines

1: 350 000 WGS 84

Plans Figueira da Foz, Nazaré, Porto de Peniche, Cascais, Lisboa Approaches, Lisboa (Lisbon), Sesimbra, Entrance to Rio Sado (Setúbal), Setúbal, Sines

#### C50 Sines to Gibraltar

1: 350 000 WGS 84

Plans Sines, Lagos, Portimão, Vilamoura, Vila Real de Santo António, Isla Cristina, Mazagón, Chipiona, Rota, Bahía de Cádiz, Puerto Sherry, Sancti-Petri, Barbate, Tarifa, Gibraltar, Strait of Gibraltar

#### C51 Cardigan Bay - Milford Haven to Tremadog Bay

1: 145 000 WGS 84

Plans Pwllheli, Aberdovey, Aberystwyth, Aberaeron, New Quay, Aberporth, Cardigan, Newport Bay, Fishguard, Entrance to Milford Haven

#### C52 Cardigan Bay to Liverpool

1: 145 000 WGS 84

Plans Conwy, Conwy Bay, Holyhead, The Swellies, Port Dinorwic, Caernarfon, Menai Strait, Porth Dinlläen, Abersoch, Pwllheli, Porthmadog, Mochras Lagoon, Barmouth

#### C53 Donegal Bay to Rathlin Island

1: 200 000 WGS 84

Plans Ballycastle, Portrush, Lough Swilly, Mulroy Bay, Sheep Haven, Gweedore Harbour and Approaches, Sound of Aran and Burtonport, Church Pool, Teelin Harbour, Killybegs Harbour, Mullaghmore Bay

#### C54 Galway Bay to Donegal Bay

1: 200 000 WGS 84

Plans Sligo Harbour, Broad Haven Bay, Portnafrankagh (Frenchport), Achill Sound, Approaches to Westport, Bofin Harbour (Inishbofin), Cleggan Bay, Clifden Bay, Approaches to Roundstone

#### C55 Dingle Bay to Galway Bay

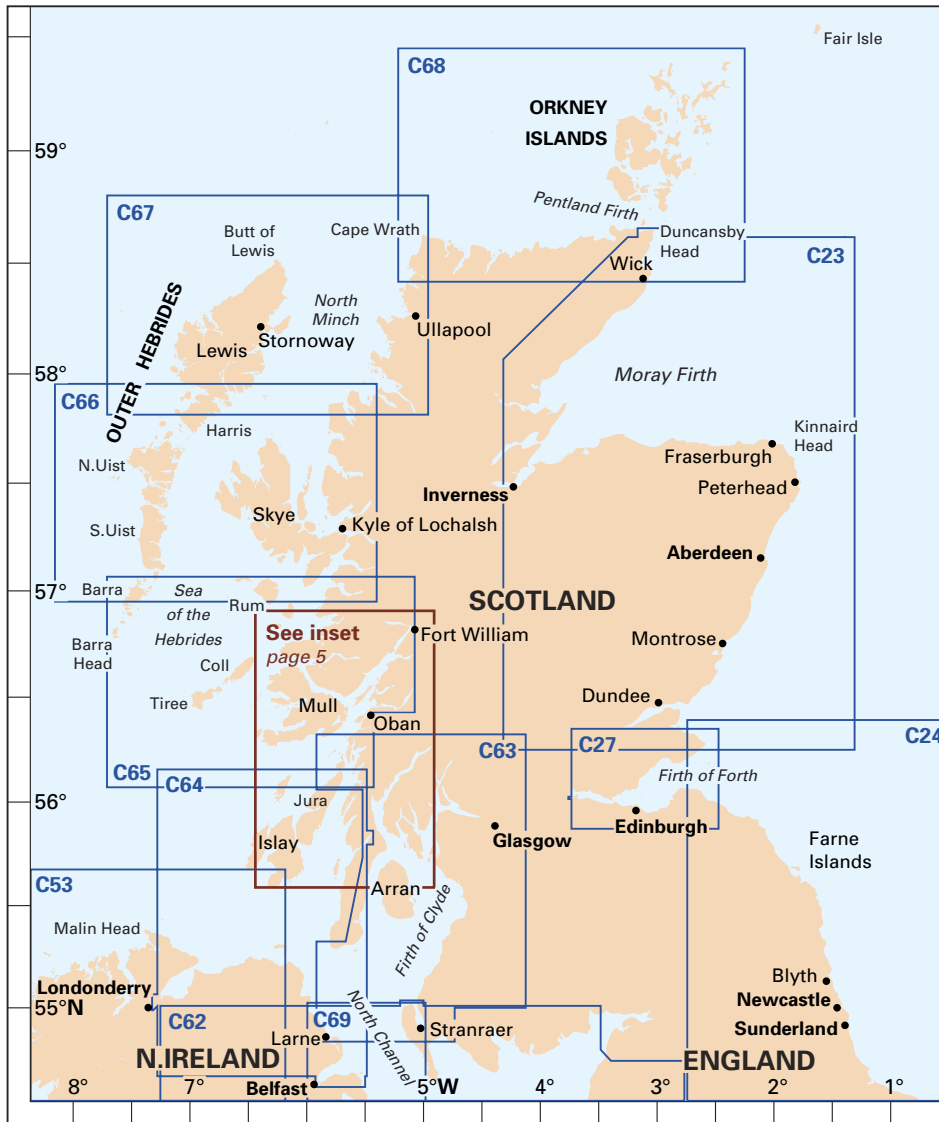
1: 200 000 WGS 84

Plans Cashla Bay, Galway Bay, Galway Harbour, Kilronan (Aran Is.), River Shannon to Limerick, Kilrush, Foynes Harbour, Fenit Island, Dingle Harbour

#### C56 Cork Harbour to Dingle Bay

1: 170 000 WGS 84

Plans Dingle Harbour, Valentia Harbour, Portmagee, Sneem, Kilmakillige & Ardroom Harbours, Castletown Berehaven, Glengarriff Harbour, Bantry



- C64 Belfast Lough to Lough Foyle and Crinan**  
1: 160 000 WGS 84  
*Plans* Loch Sween (Tayvallich), Continuation of West Loch Tarbert, Port Ellen, Lough Foyle, Portrush, Larne, Belfast Lough, Carrickfergus, Bangor Bay, Continuation of River Foyle to Londonderry
- C65 Crinan to Mallaig and Barra**  
1: 155 000 WGS 84  
*Plans* Castle Bay (Barra), Mallaig, Tobermory (Mull), Caledonian Canal Entrance, Linn of Lorn, Dunstaffnage Bay, Oban, Loch Feochan Entrance, Sound of Luing
- C66 Mallaig to Rubha Reidh and Outer Hebrides**  
1: 155 000 WGS 84  
*Plans* Loch Gairloch, Kyleakin, Portree, Uig, Dunvegan, Loch Boisdale (South Uist), Loch Carnan, Loch Maddy, East Loch Tarbert, St Kilda
- C67 North Minch and Isle of Lewis**  
1: 155 000 WGS 84  
*Plans* Loch Inchar (Kinlochbervie), Loch Inver, Ullapool, Stornoway Harbour, Loch Carloway
- C68 Cape Wrath to Wick and the Orkney Islands**  
1: 160 000 WGS 84  
*Plans* Pierowall Harbour, Whitehall Harbour, Bay of Kirkwall, Stromness Harbour, Scrabster Harbour, Wick Bay
- C69 Loch Ryan to Belfast Lough and Strangford Lough**  
1: 90 000 WGS 84  
*Plans* Carnlough Harbour, Larne, Carrickfergus, Bangor Bay, Donaghadee Sound, Entrance to Strangford Lough, Portaferry Marina, Strangford, Ardglass, Stranraer, Portpatrick
- C70 Southern North Sea Passage Chart**  
1: 900 000 WGS 84
- C80 British Isles**  
1: 1 500 000 WGS 84

- Harbour, Crookhaven, Schull Harbour, Baltimore Harbour, Castlehaven, Glandore Harbour, Courtmacsherry Harbour, Kinsale Harbour, Cork Harbour Entrance
- C57 Tuskar Rock to Old Head of Kinsale**  
1: 170 000 WGS 84  
*Plans* Kinsale Harbour, Cork Lower Harbour, Crosshaven, Youghal Harbour, Dungarvan Harbour, Waterford Harbour, Dunmore East Harbour, Kilmore, Cork continuation to East Ferry Marina
- C58 Trevoze Head to Bull Point**  
1: 130 000 WGS 84  
*Plans* Ilfracombe, Barnstaple and Bideford, Continuation to Barnstaple, Lundy, Bude Haven, Port Isaac and Port Gaverne, River Camel, Padstow Harbour
- C59 Bristol Channel - Worms Head and Bull Point to Sharpness**  
1: 115 000 WGS 84  
*Plans* The Mumbles, Swansea Marina, Porthcawl, Cardiff Bay, Penarth Marina, Avonmouth, Continuation of River Avon (Avonmouth Bridge to Bristol), Bridgwater Bay and Burnham-on-Sea, Watchet, Minehead, Continuation - Severn Bridge to Sharpness
- C60 Gower Peninsula to Cardigan**  
1: 130 000 WGS 84  
*Plans* Fishguard, Ramsey Sound, Solva Harbour & Approaches, Jack Sound, Milford Haven, Tenby & Caldey Island

- C61 St George's Channel - Anglesey to Dublin, Waterford & The Smalls**  
1: 280 000 WGS 84  
*Plans* Cardigan, New Quay, Aberystwyth, Aberdovey, Barmouth, Porthmadog, Tremadog Bay, Menai Strait, Menai Strait - The Swellies, Conwy, Dun Laoghaire, Dublin Bay, Wicklow, Arklow, Wexford
- C62 Irish Sea**  
1: 280 000 WGS 84  
*Plans* Carrickfergus, Bangor Bay, Entrance to Strangford Lough, Portaferry Marina, Strangford, Ardglass, Entrance to Carlingford Lough, Malahide Inlet, Howth, Dun Laoghaire Harbour, Ribble Estuary, Approaches to Fleetwood, River Lune, Continuation to Carlingford Marina, Continuation to Preston
- C63 Firth of Clyde**  
1: 160 000 WGS 84  
*Plans* Crinan Approaches, Ardrishaig, East Loch Tarbert, Campbeltown Loch, Campbeltown Harbour, Caladh Harbour, Burnt Islands, Rothesay Harbour, Lamlash Harbour, Rhu & Helensburgh, Dumbarton, Kip Marina, Largs Channel, Largs Yacht Haven, Millport, Ardrossan, Irvine, Troon, Ayr, Girvan, Stranraer, Portpatrick



## Y Charts - small format, high detail charts

Individual charts from our small format packs are available as Y charts. These are printed on water-resistant Pretex® paper, supplied folded in a recycled plastic wallet. Also available laminated.

- Y2 Rivers Ore and Alde**  
1: 35 000 WGS 84
- Y6 Suffolk and Essex Coasts**  
1: 120 000 WGS 84
- Y7 Thames Estuary South**  
1: 120 000 WGS 84
- Y9 The Wash**  
1: 90 000 WGS 84  
*Plans Boston, King's Lynn, Brancaster Harbour and Overy Staithe, Wells-next-the-Sea, Blakeney Harbour, Wisbech Yacht Harbour*
- Y12 Rivers Stour and Orwell**  
1: 35 000 WGS 84  
*Plans Upper Orwell to Ipswich, Fox's Marina, Woolverstone Marina, Suffolk Yacht Harbour, Shotley Marina*
- Y14 The Swale**  
1: 20 000 WGS 84  
*Plans Swale Marina*
- Y16 Walton Backwaters to Ipswich and Woodbridge**  
1: 35 000 WGS 84  
*Plans River Orwell continuation to Ipswich, Fox's Marina, River Deben continuation above Ramsholt, Tide Mill Yacht Harbour, Woolverstone Marina, Suffolk Yacht Harbour, Shotley Marina, Titchmarsh Marina*
- Y17 The Rivers Colne, Blackwater, Crouch & Roach**  
1: 50 000 WGS 84  
*Plans Continuation of River Colne to Colchester, Brightlingsea, Tollesbury Marina, Bradwell Marina, Burnham Yacht Harbour, Continuation of River Roach to Rochford and Havengore Creek*
- Y18 The River Medway & Approaches - Sheerness to Rochester and Entrance to the River Medway**  
1: 20 000 WGS 84  
*Plans Whitton Marine, Port Werburgh, Gillingham Marina, River Medway Continuation, Entrance to the River Medway*
- Y23 Poole Harbour**  
1: 17 000 WGS 84  
*Plans Holes Bay, Salterns Marina, Moriconium Quay & Lake Yard Marina*
- Y26 Milford Haven and River Cleddau**  
1: various WGS 84  
*Plans Milford Marina, Neyland Yacht Haven, Milford Haven - St Ann's Head to Neyland Point, River Cleddau above Neyland Point, Continuation to Haverfordwest*
- Y30 Isle of Wight**  
1: 100 000 WGS 84
- Y31 Christchurch to the Solent**  
1: 60 000 WGS 84  
*Plans Lymington River, Christchurch*
- Y32 Eastern Approaches to the Solent**  
1: 60 000 WGS 84
- Y33 Langstone and Chichester Harbours**  
1: 21 500 WGS 84  
*Plans Southsea Marina, Northney Marina, Emsworth Yacht Harbour, Birdham Pool and Chichester Marina*
- Y34 Chichester & Langstone Harbours**  
1: 35 000 WGS 84  
*Plans Southsea Marina, Northney Marina, Emsworth Yacht Harbour, Sparkes Marina, Chichester and Birdham Marinas*
- Y35 Portsmouth Harbour & Approaches**  
1: 22 500 WGS 84
- Y36 Central Solent**  
1: 35 000 WGS 84
- Y37 Southampton Water**  
1: 35 000 WGS 84  
*Plans Continuation of Southampton Water*
- Y38 West Solent**  
1: 35 000 WGS 84  
*Plans Yarmouth Harbour*
- Y39 Poole Harbour**  
1: 20 000 WGS 84  
*Plans Salterns Marina, Continuation of Studland Bay, Moriconium Quay & Lake Yard Marina*
- Y40 River Exe**  
1: 21 500 WGS 84  
*Plans Exmouth Dock, River Exe continuation to Exeter*
- Y41 Teignmouth and Tor Bay**  
1: 55 000 WGS 84  
*Plans Teignmouth Harbour, Torquay Harbour, Paignton Harbour, Brixham Harbour*
- Y42 Exmouth to Salcombe**  
1: 100 000 WGS 84
- Y43 River Dart**  
1: 15 000 WGS 84  
*Plans Kingswear, Continuation to Totnes*
- Y44 Salcombe Harbour**  
1: 15 000 WGS 84  
*Plan Salcombe*
- Y45 Plymouth Harbour**  
1: 20 000 WGS 84  
*Plans Mayflower Marina, King Point & Millbay Marinas, Sutton Harbour and Queen Anne's Battery Marina, Plymouth Yacht Haven, Continuation of River Yealm, Plymouth Harbour, Plymouth to Saltash and Saint Germans*
- Y46 River Fowey**  
1: 9000 WGS 84  
*Plans Continuation to Lostwithiel*
- Y47 Falmouth Harbour**  
1: 20 000 WGS 84  
*Plans Mylor Yacht Harbour, Falmouth Marina, Falmouth Inner Harbour*
- Y48 Helford River**  
1: 17 000 WGS 84  
*Plans Continuation of Helford River to Gweek*
- Y49 Isles of Scilly**  
1: 40 000 WGS 84  
*Plans St Mary's Road*
- Y50 Saint Mary's, Treco and Surrounding Islands**  
1: 20 000 WGS 84
- Y58 River Fal - Falmouth to Truro**  
1: 20 000 WGS 84  
*Plans Mylor Yacht Harbour, Falmouth Marina, Falmouth Inner Harbour*
- Y70 Isle of Man**  
1: 85 000 WGS 84  
*Plans Peel, Port Erin, Calf Sound, Bay Ny Carrickey & Castletown Bay, Douglas, Ramsey*
- Y80 Sound of Gigha**  
1: 25 000 WGS 84
- Y81 Corryvreckan, Sound of Luing and Garvellachs**  
1: 30 000 WGS 84
- Y82 Loch Melfort to Loch Feochan**  
1: 30 000 WGS 84  
*Plan Loch Feochan*
- Y83 Sound of Kerrera and Approaches to Oban**  
1: 15 000 WGS 84
- Y84 Firth of Lorn & Lismore**  
1: 40 000 WGS 84

NEW

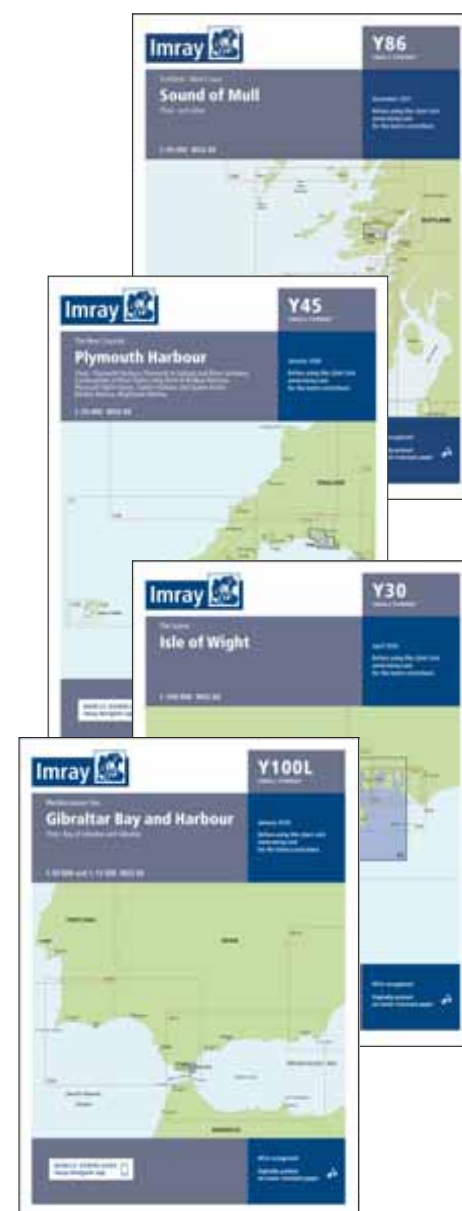
## Y charts for Scotland

Designed with the Clyde Cruising Club

Small format A2-sized single sheet charts are now available for popular areas in Scotland



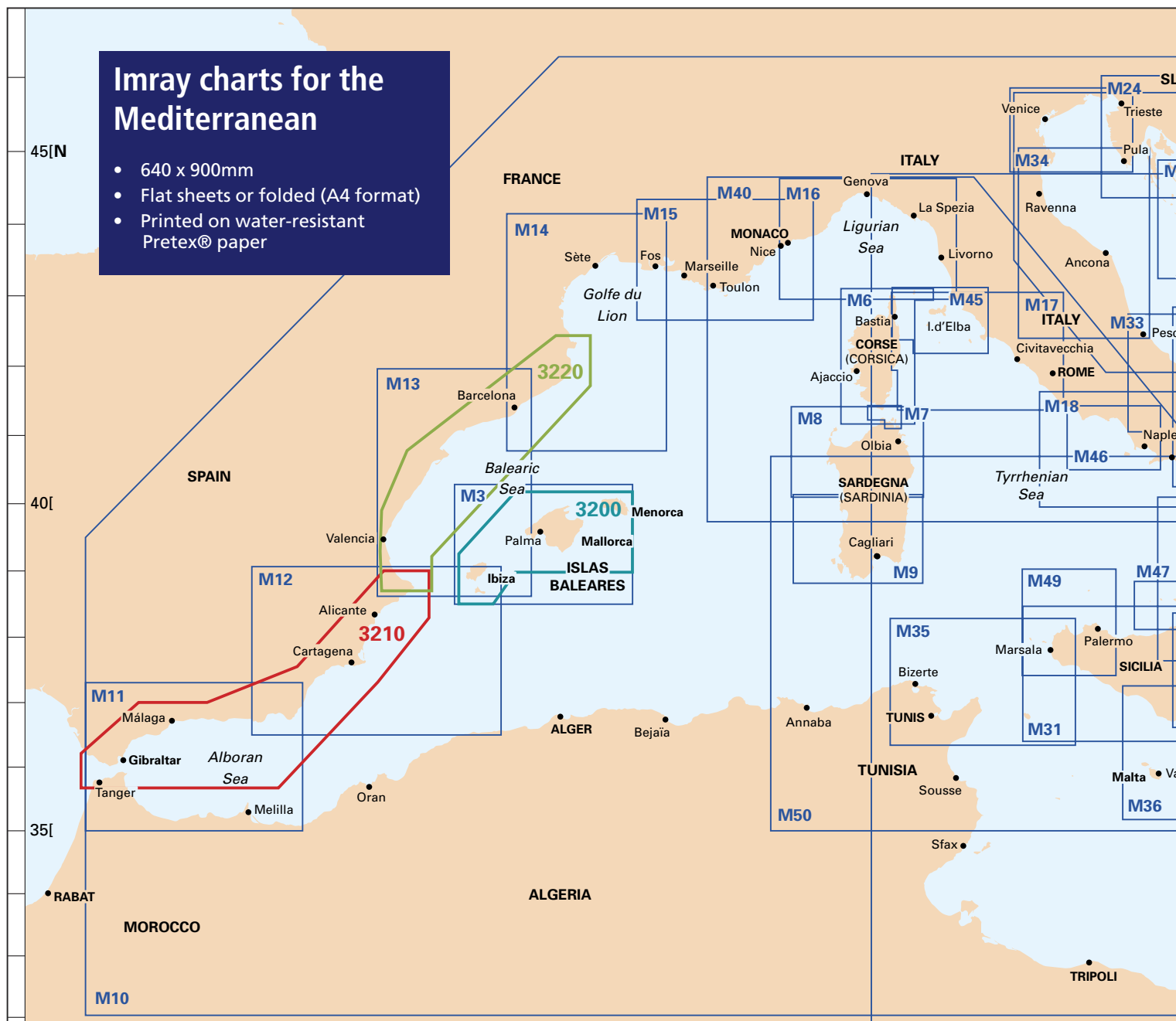
- Y85 South Loch Linnhe and Loch Creran**  
1: 40 000 WGS 84  
*Plan Loch Creran Continuation*
- Y86 Sound of Mull**  
1: 40 000 WGS 84  
*Plan Loch Aline*
- Y87 West Sound of Mull and Loch Sunart**  
1: 40 000 WGS 84  
*Plans Tobermory, Continuation of Loch Sunart*
- Y100 Gibraltar Bay and Harbour**  
Various WGS 84  
*Plans Bay of Gibraltar and Gibraltar*





## Imray charts for the Mediterranean

- 640 x 900mm
- Flat sheets or folded (A4 format)
- Printed on water-resistant Pretex® paper



## Mediterranean Spain chart packs

Includes mobile download: **Imray Digital Charts**

A range of chart packs focusing on the Mediterranean coast of Spain and its offlying islands designed to be used alongside Imray pilot books which detail the marked anchorages. Loose-leaf sheets provide all of the necessary information for passage planning and detailed approaches to the harbours and anchorages of this appealing cruising ground.

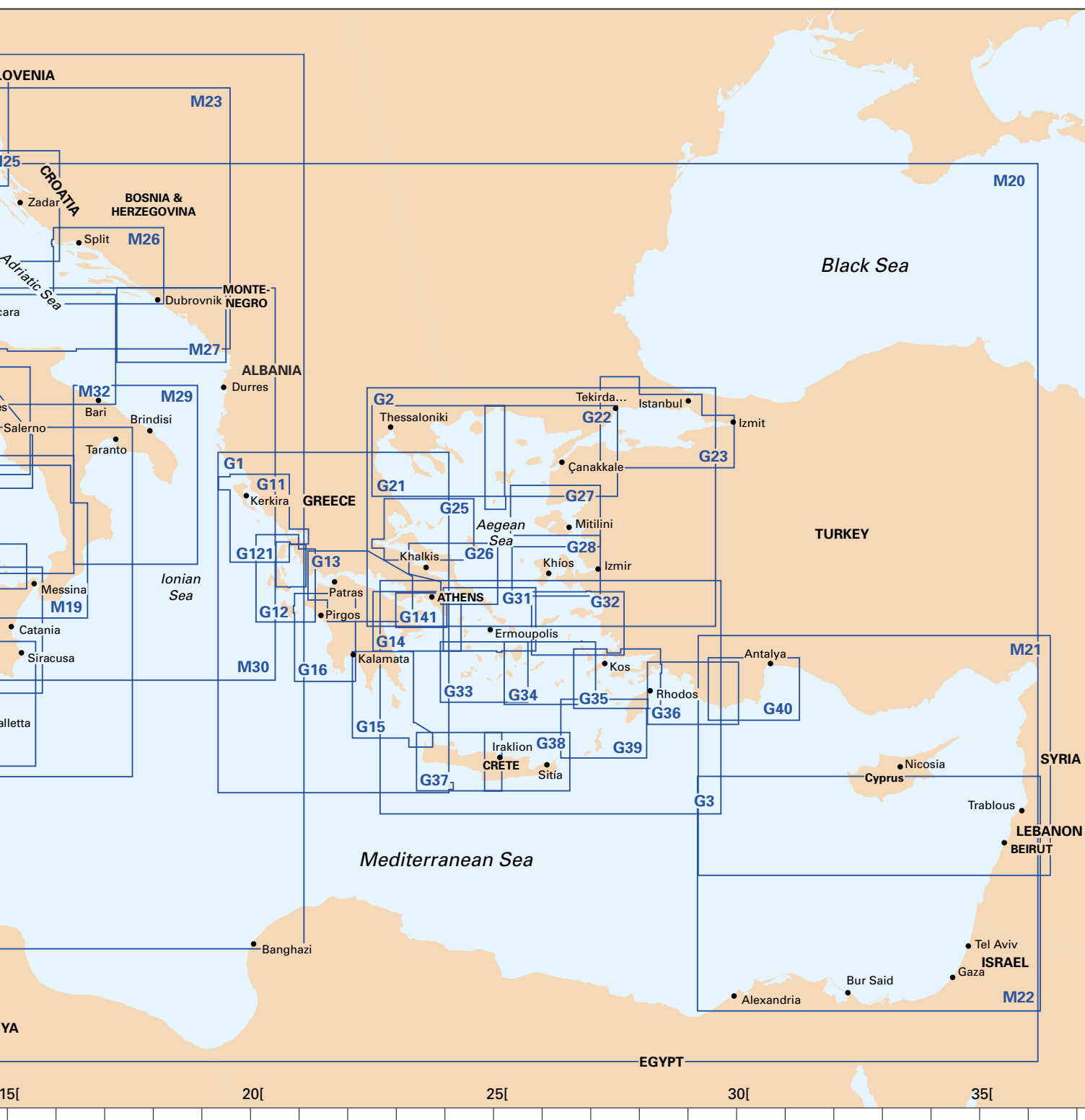
In loose-leaf A2 format in a tough plastic wallet. Also available wi-ro-bound.

**3200 ISLAS BALEARES**

**3210 GIBRALTAR TO CABO DE LA NAO**

**3220 CABO DE LA NAO TO THE FRENCH BORDER**





- M3** **Islas Baleares - Formentera, Ibiza, Mallorca, Menorca and Cabrera**  
1: 350 000 WGS 84  
*Plans* San Antonio (Ibiza), Puerto de Ibiza, (Ibiza), Puerto de Palma (Mallorca), Porto Colom (Mallorca), Puerto de Mahón (Menorca), Alcudia (Mallorca), Approaches to Ciudadela (Menorca)
- M6** **Île de Corse**  
1: 255 000 WGS 84  
*Plans* Macinaggio, Bastia, Approaches to Calvi, Ajaccio, Approach to Propriano, Bonifacio, Îles Lavezzi
- M7** **Bonifacio Strait**  
1: 65 000 WGS 84  
*Plans* La Maddalena

- M8** **North Sardegna**  
1: 255 000 WGS 84  
*Plans* Arcipelago di La Maddalena - Southern Group, Golfo di Cugnana, Golfo Spurlatta, Passaggio dei Fornelli, Porto Torres, Approaches to Alghero
- M9** **South Sardegna**  
1: 255 000 WGS 84  
*Plans* Approaches to Arbatax, Approaches to Torre Grande, Canale di San Pietro, Porto di Cagliari, Capo Carbonara, Golfo di Teulada
- M10** **Western Mediterranean - Gibraltar to the Ionian Sea**  
1: 2 750 000 WGS 84

- M11** **Gibraltar to Cabo de Gata & Morocco**  
1: 440 000 WGS 84  
*Plans* Strait of Gibraltar, Gibraltar, Estepona, Puerto de Almerimar, Almería, Ceuta
- M12** **Cabo de Gata to Dénia & Ibiza**  
1: 500 000 WGS 84  
*Plans* Mar Menor, Torrevieja, Alicante, Villajoyosa, Altea, Dénia
- M13** **Dénia to Barcelona and Ibiza**  
1: 440 000 WGS 84  
*Plans* Dénia, Valencia Harbour, Tarragona, Barcelona Harbour, San Antonio (Ibiza)

## M14 Barcelona to Bouches du Rhône

1: 440 000 WGS 84

*Plans* Barcelona Harbour, Barcelona Port Vell, Puerto Olímpico, Palamós, Puerto de L'Escala, Port Vendres, St-Cyprien-Plage, Cap d'Agde, Sète, Golfe de Fos

## M15 Marseille to San Remo

1: 325 000 WGS 84

*Plans* Marseille Vieux-Port & Îles du Frioul, Îles d'Hyères, Golfe de St-Tropez, Golfe de La Napoule, Antibes, Nice, Rade de Villefranche & Cap Ferrat, Monaco

## M16 Ligurian Sea

1: 325 000 WGS 84

*Plans* San Remo, Approaches to Genova, Golfo Marconi, Approaches to La Spezia, Viareggio, Approaches to Livorno

## M17 North Tuscan Islands to Rome

1: 325 000 WGS 84

*Plans* Scarlino to Punta Ala, Approaches to Giglio Marina, Approaches to Civitavecchia, Approaches to Fiumicino and Fiuma Grande, Approaches to Anzio

## M18 Capo d'Anzio to Capo Palinuro

1: 325 000 WGS 84

*Plans* Rada di Gaeta, Golfo di Pozzuoli and Rada di Napoli, Approaches to Acciaroli, Capo Palinuro

## M19 Capo Palinuro to Punta Stilo

1: 325 000 WGS 84

*Plans* Golfo di Policastro, Approaches to Vibo Valentia, Isole Alicudi, Stretto di Messina

## M20 Eastern Mediterranean - Sardegna to Port Said and the Black Sea

1: 2 750 000 WGS 84

## M21 South Coast of Turkey, Syria, Lebanon & Cyprus - Passage Chart

1: 785 000 WGS 84

*Plans* Alanya Limani (Turkey), Larnaca Marina (Cyprus), Mersin (Turkey)

## M22 Egypt to Israel, Lebanon and Cyprus - Passage Chart

1: 785 000 WGS 84

*Plans* Larnaca Marina (Cyprus), Jounié (Lebanon), Hefa (Haifa) (Israel), Bur Sa'id (Port Said) (Egypt)

## M23 Adriatic Sea - Golfo di Trieste to Bar and Promontorio del Gargano

1: 750 000 WGS 84

## M24 Golfo di Trieste to Lošinj and Rab

1: 220 000 WGS 84

*Plans* Novigrad, Pore , Rovinj, Brijuni Islands to Pula, Veruda to Medulin Bay, Approaches to Punat, Approaches to Mali Lošinj, Otok Ilovik Channel

## M25 Otok Rab to Šibenik

1: 220 000 WGS 84

*Plans* Prolaz Zapuntel Passage, Passage Between Otok Molat & Dugi Otok, Zadar, Luka Telašćica, The Kornati Islands, Šibenik and Rijeka Krka, Prolaz Proversa Vela & Mala

## M26 Split to Dubrovnik

1: 220 000 WGS 84

*Plans* Luka Rogoznica, Trogirski Kanal, Approaches to Split, The Drvenik Islands, Splitska Vrata, Approaches to Hvar & the Pakleni Islands, Approaches to Korčula, Approaches to Ubli, Approaches to Gruž & Dubrovnik Marina

## M27 Dubrovnik to Bar and Ulcinj

1: 220 000 WGS 84

*Plans* Luka Polače, The Elaphite Islands, Approaches to Dubrovnik, Boka Kotorska, Tivat, Approaches to Budva, Bar Marina, Ulcinj

## M29 Golfo di Taranto

1: 375 000 WGS 84

*Plans* Approaches to Brindisi, Approaches to Otranto, Approaches to Gallipoli, Approaches to Crotona

## M30 Southern Adriatic and Ionian Seas - Dubrovnik to Kérkira (Corfu) & Sicilia

1: 850 000 WGS 84

*Plans* Approaches to Brindisi, Approaches to Siracusa

## M31 Sicilia

1: 400 000 WGS 84

*Plans* San Vito Lo Capo, Approaches to Palermo, Catania

## M32 Adriatic Italy (South) - Pescara to Bari

1: 325 000 WGS 84

*Plans* Porto di Ortona, Porto di Punta Penna (Vasto), Termoli Marina di San Pietro (Termoli), Isole Tremiti, Porto di Vieste, Marina del Gargano, Porto di Trani, Bari Porto Nuovo

## M33 Adriatic Italy (North) - Delta del Po to Pescara

1: 350 000 WGS 84

*Plans* Ravenna Coast, Porto di Ravenna, Porto di Rimini , Porto di Fano, Porto di Ancona, Porto di San Benedetto del Tronto, Marina di Pescara

## M34 Golfo di Venezia

1: 220 000 WGS 84

*Plans* Chioggia, Venezia, Approaches to Grado, Monfalcone, Trieste

## M35 Sicilian Channel

1: 375 000 WGS 84

*Plans* Bizerte, Cap Gammarth to Carthage, Port de Kélibia, Port Yasmine Hammamet, Pantelleria

## M36 South Coast of Sicilia to Malta

1: 275 000 WGS 84

*Plans* Licata, Porto Palo and Capo Passero, Siracusa, Grand Harbour & Marsamxett (Malta)

## M40 Ligurian and Tyrrhenian Seas

1: 950 000 WGS 84

*Plans* Monte Argentario, Bonifacio Strait, Golfo di Salerno

## M45 Tuscan Archipelago

1: 180 000 WGS 84

*Plans* Approaches to Porto Capraia, Approaches to Portoferraio, Bastia, Talamone, Approaches to Porto S. Stefano

## M46 Isole Pontine to the Bay of Naples

1: 180 000 WGS 84

*Plans* Approaches to Ponza, Approaches to Porto d'Ischia, Approaches to Sorrento, Approaches to Marina Grande (Capri)

## M47 Aeolian Islands

1: 140 000 WGS 84

*Plans* Approaches to Lipari, Bocche di Vulcano, Approaches to Milazzo

## M49 West Sicily and Egadi Islands

1: 275 000 WGS 84

*Plans* Isola di Ustica, Isole Egadi, Approaches to Trapani, Approaches to Favignana, Approaches to Marsala, Mazara del Vallo

## M50 Sardegna to Ionian Sea

1: 1 100 000 WGS 84

*Plans* Stretto di Messina

## G1 Mainland Greece and the Peloponnisos - Passage Chart

1: 729 000 WGS 84

*Plans* Vóríon Stenón Kérkiras, Ríon - Andírrion Bridge, Approaches to Pátras

## G11 North Ionian Islands - Nisos Kérkira to Nisos Levkas

1: 185 000 WGS 84

*Plans* Continuation of North Ionian Islands to Nísíς Othoní, Vóríon Stenó Kérkiras,

Órmos Gouvíon (Nisos Kérkira), Kérkira (Corfu Town) (Nisos Kérkira), Órmos Párga, Continuation of Amvrakikós Kólpos, Limín Alípa (Nisos Kérkira), Órmos Lákka (Nisos Paxoi), Port Gaios (Nisos Paxoi)

## G12 South Ionian Islands - Nisos Levkas to Nisos Zákynthos

1: 190 000 WGS 84

*Plans* Dhioriga Levkádhos (Levkas Canal), Vasiliki (N. Levkas), Órmos Fiskárdho (N. Kefallínia), Órmos Áyios Eufímia (N. Kefallínia), Órmos Frikou (N. Itháca), Kálamos Harbour (N. Kálamos)

## G121 The Inland Sea

1: 95 000 WGS 84

*Plans* Dhioriga Levkádhos (Levkas Canal), Vasiliki (Nisos Levkas), Órmos Fiskárdho (Cephalonia), Órmos Áyios Eufímia (Cephalonia), Órmos Frikou (Nisos Itháca), Kálamos Harbour

## G13 Gulfs of Patras and Corinth - Patraikós Kólpos and Korinthiakós Kólpos

1: 220 000 WGS 84

*Plans* Mesolóngion, Liménas Pátron, Ríon - Andírrion Bridge, Órmos Aiyíou, Krissaios Kólpos, Órmos Andíkirion, Kiato, Órmos Loutrákiou, Corinth Canal (Dhiórix Korínthou)

## G14 Saronic and Argolic Gulfs

1: 190 000 WGS 84

*Plans* Marina Alimos (Kalamáki), Stenón Metópis, Limín Póros, Nísídhēs Tselevínia, Stenón Spétsai, Návplion

## G141 Saronikós Kólpos - Corinth Canal to Ákra Souíon and Nisos Póros

1: 110 000 WGS 84

*Plans* Órmos Falírou, Marina Alimos (Kalamáki), Limín Ágina

## G15 Southern Pelopónnisos - Kalámata to Nisos Kriti and Ákra Tourkovigla

1: 190 000 WGS 84

*Plans* Liménas Kalamátas, Yíthion, Órmos Kapsáli, Dhiakofti, Monemvasía (Yéfira), Nisos Andikíthera to Nisos Kriti

## G16 Western Pelopónnisos - Killini to Kalamáta

1: 190 000 WGS 84

*Plans* Limín Killinis, Limín Katakólou, Órmos Kiparissias, Órmos Navarínou, Stenón Methónis, Koróni, Liménas Kalamatás

## G2 Aegean Sea (North) - Passage Chart

1: 750 000 WGS 84

*Plans* Approaches to Ístanbul, Izmit Kórfezi, Çanakkale Bogazi (The Dardanelles)

## G21 Northwest Aegean

1: 275 000 WGS 84

*Plans* Approaches to Thessaloníki, Néa Skioni, Pórtο Koufó, Nísíς Dhiáporos Anchorages, Nísíς Ammouliani, Stenón Thásou

## G22 Northeast Aegean

1: 275 000 WGS 84

*Plans* Approaches to Lágos and Fanáron, Órmos Moudhrou, Entrance to Çanakkale Bo azi, Nara Geçidi, Continuation to Nisos Áyios Evstrátios

## G23 Marmara Denizi

1: 275 000 WGS 84

*Plans* Türkeli & Pa alimani Islands, Istanbul, Princes Islands, Approaches to Pendik

## G25 Northern Sporades and North Évvoia

1: 190 000 WGS 84

*Plans* Órmos Skiáthou (Nisos Skiáthos), Stenón Alonnisou, Linariá (Nisos Skiros), Continuation of Maliakós Kólpos, Nisoí Likhades



- G26 Níros Évvoia**  
1: 190 000 WGS 84  
*Plans* Linariá (Níros Skíros), Kími (Níros Évvoia), Approaches to Khalkís, Porthmós Evripou, Dhiavlos Stenó, Erétria (Níros Évvoia), Nisidhes Petaloi & Approaches to Marmari
- G27 Níros Lésvos & the Coast of Turkey**  
1: 190 000 WGS 84  
*Plans* Ayvalik, Sígri (N. Lésvos), Entrance to Kólpos Kalloni (N. Lésvos), Entrance to Kólpos Yéras (N. Lésvos), Mitilíni (N. Lésvos), Bademli Limani
- G28 Níros Khíos & the Coast of Turkey**  
1: 190 000 WGS 84  
*Plans* Approaches to Psará (Níros Psará), Approaches to Khíos (Níros Khíos), Órmos Mandráki (Níros Oinoússa), Çesme Körfezi (Turkey), Foça Limani (Turkey), Sigaçik Limani (Turkey)
- G3 Aegean Sea (South)**  
1: 750 000 WGS 84  
*Plans* Approaches to Rhodes
- G31 Northern Cyclades**  
1: 200 000 WGS 84  
*Plans* Limín Áy. Nikoláou (Níros Kea), Approaches to Finikas (Níros Síros), Órmos Naousis (Níros Páros), Míkonos & Approaches (Níros Míkonos), Órmos Gávriou (Níros Andros)
- G32 Eastern Sporades, Dodecanese and the Coast of Turkey**  
1: 200 000 WGS 84  
*Plans* Kuşadası (Turkey), Stenón Sámou, Póros Fournon, Órmos Pátmou (Níros Pátmos), Órmos Parthéni (Níros Léros), Yalikavak Limani (Turkey), Stenón Lérou
- G33 Southern Cyclades - (West Sheet)**  
1: 190 000 WGS 84  
*Plans* Stenón Kimólou-Poliagou and Stenón Milou-Kimólou, Órmos Náxou (N. Náxos), Órmos Livádhíou (N. Sérifos), Stenón Andipárou
- G34 Southern Cyclades - (East Sheet)**  
1: 200 000 WGS 84  
*Plans* Órmos Íou (Níros Íos), Koufonisia (Epano Koufonisia), Órmos Maltezana (Análipis) (Níros Astipálaia)
- G35 Dodecanese and the Coast of Turkey**  
1: 190 000 WGS 84  
*Plans* Approaches to Kós (Níros Kós), Approaches to Turgutreis (Turkey), Bodrum (Turkey), Approaches to Ródhos (Níros Ródhos), Órmos Sími (Níros Sími)
- G36 Marmaris to Kekova Adasi**  
1: 200 000 WGS 84  
*Plans* Marmaris Limani, Skopea Limani, Göçhe, Fethiye, Approaches to Kastellórizo and Kaş
- G37 Níros Kríti (West)**  
1: 190 000 WGS 84  
*Plans* Kali Limenes, Órmos Áy. Galínis, Palaiochora, Órmos Gramvoúsa, Khanía, Órmos Souðhas, Rethimno
- G38 Níros Kríti (East)**  
1: 190 000 WGS 84  
*Plans* Iraklion, Spinalónga, Áyios Nikólaos, Sitía
- G39 Níros Kápathos to Níros Ródhos**  
1: 190 000 WGS 84  
*Plans* Limín Fri (Níros Kásos), Pigádhia (Níros Kápathos), Órmos Línthou (Níros Ródhos), N. Khálki to N. Alimiá
- G40 Kaş to Antalya**  
1: 200 000 WGS 84  
*Plans* Kekova Roads, Kekova Adasi, Finike, Antalya Celebi Marina, Kemer Turkiz Marina

## Imray lolaire charts for the Atlantic Ocean

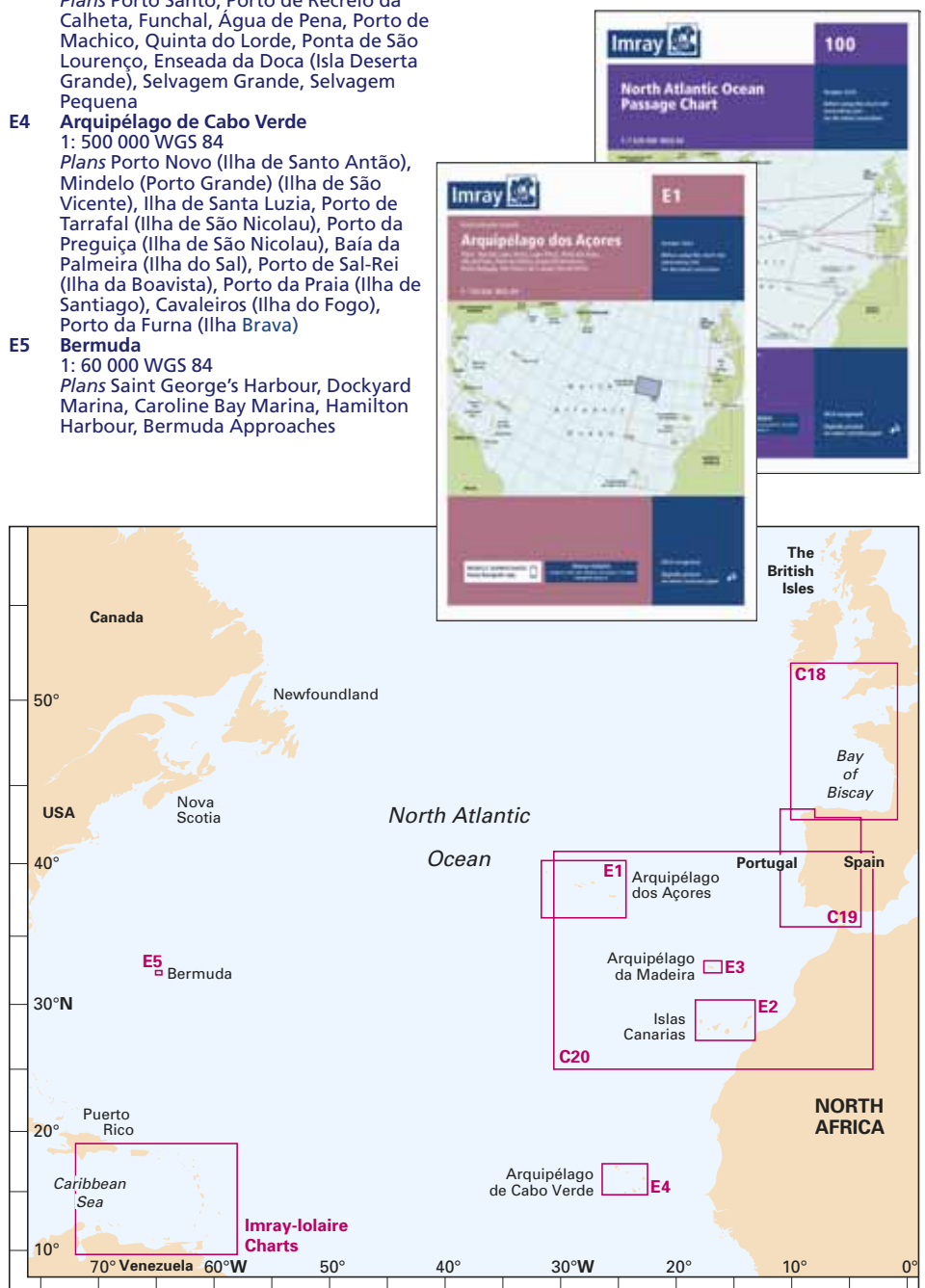
- E1 Arquipélago dos Açores**  
1: 750 000 WGS 84  
*Plans* Vila das Lajes, Horta, Lajes (Pico), Porto das Velas, Vila da Praia, Praia da Vitória, Angra do Heroísmo, Ponta Delgada, Vila Franco do Campo, Vila do Porto
- E2 Islas Canarias**  
1: 600 000 WGS 84  
*Plans* Tazacorte, Puerto de Santa Cruz, Puerto de la Estaca, Puerto de San Sebastian de la Gomera, Dársena de Los Llanos (Marina Santa Cruz), Dársena Pesquera (Marina Tenerife), Puerto de las Palmas, Morro Jable, Gran Trajal, Marina Rubicón, Puerto Calero, Puerto de Naos & Los Marmoles (Marina Lanzarote), Estrecho del Río
- E3 Arquipélago da Madeira**  
1: 170 000 WGS 84  
*Plans* Porto Santo, Porto de Recreio da Calheta, Funchal, Água de Pena, Porto de Machico, Quinta do Lorde, Ponta de São Lourenço, Enseada da Doca (Isla Deserta Grande), Selvagem Grande, Selvagem Pequena
- E4 Arquipélago de Cabo Verde**  
1: 500 000 WGS 84  
*Plans* Porto Novo (Ilha de Santo Antão), Mindelo (Porto Grande) (Ilha de São Vicente), Ilha de Santa Luzia, Porto de Tarrafal (Ilha de São Nicolau), Porto da Preguiça (Ilha de São Nicolau), Baía da Palmeira (Ilha do Sal), Porto de Sal-Rei (Ilha da Boavista), Porto da Praia (Ilha de Santiago), Cavaleiros (Ilha do Fogo), Porto da Furna (Ilha Brava)
- E5 Bermuda**  
1: 60 000 WGS 84  
*Plans* Saint George's Harbour, Dockyard Marina, Caroline Bay Marina, Hamilton Harbour, Bermuda Approaches

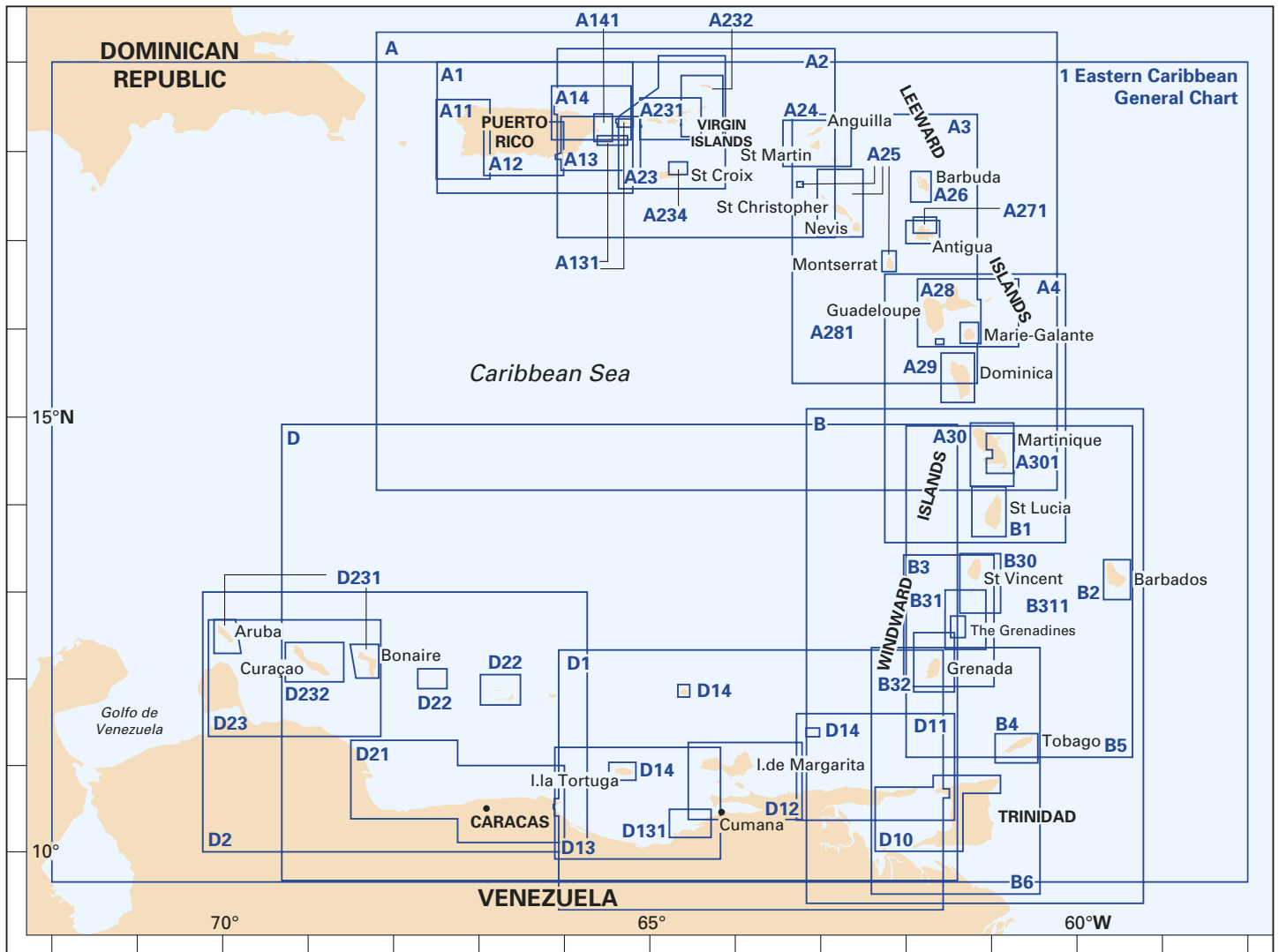
### CHART 100 NORTH ATLANTIC OCEAN PASSAGE CHART

An important companion for Atlantic yachtsmen on passage and an excellent source of planning information

At a scale of 1:7,620,000, this chart covers the North Atlantic from Brazil to Newfoundland and Gibraltar to the Caribbean. Constructed on a conical projection which means that Great Circle tracks can be plotted as straight lines rather than curves. The chart shows the main trend of contours, limits of ice, magnetic variations and key routes as identified by D M Street.

The accompanying booklet includes notes on the routes and small wind rose charts, with charts showing excessive wave heights and storm frequencies.





## Imray Iolaire charts for the Caribbean

- **Pilotage notes** Most of the charts in the series include sailing directions
- Compiled with Donald M. Street Jnr who has sixty years of unrivalled first-hand knowledge of the area
- **Waterproof paper** Each sheet is printed on durable water-resistant Pretex® paper. Ideal for charter boats where wear and tear is considerable
- **Flat or folded** Published flat, size 640mm x 900mm (25" x 35") folded in a plastic wallet

- 1 Eastern Caribbean - General Chart  
1: 1 800 000 WGS 84  
Plans Cabo de la Vela (Colombia), Bahia Bolivar Puerto Ricardo (Colombia), Bahia Honda (Colombia), Monjes del Sur (Colombia), Bahia Salinas and Los Taques, Amuay

### PUERTO RICO

- A** Puerto Rico to Martinique - Passage Chart  
1: 1 000 000 WGS 84
- A1** Puerto Rico - Passage Chart  
1: 285 000 Undetermined Datum  
Plans Bahia De Mayaguez, Puerto Arecibo, San Juan, Bahia De Ponce
- A11** Bahia de Guanica to Punta Borinquen  
1: 116 700 WGS 84  
Plans Bahia de Mayaguez, Puerto Real, Bahia de Boqueron, Cabo Rojo to Punta Brea
- A12** Punta Figuras to Bahia de Guanica  
1: 116 700 WGS 84  
Plans Bahia De Guanica, Bahia De Guayanilla, Bahia De Ponce, Ponce, Isla Caja De Muertos, Punta Petrona, Bahia De Jobos, Arroyo
- A13** Cabo San Juan to Culebra Island and Punta Figuras  
1: 116 700 WGS 84  
Plans Palmas Del Mar, Puerto Arroyo and Puerto Patillas, Ensenada Honda, Pasaje Medio Mundo

- A131 Isla de Culebra and Isla de Vieques**  
1: Various WGS 84  
Plans Isla de Culebra, Isla de Vieques, Esperanza (Isla de Vieques), Ensenada Honda (Isla de Vieques)
- A14 San Juan to Isla de Vieques and Isla de Culebra**  
1: 116 700 WGS 84  
Plans Bahía De San Juan, El Conquistador Marina and Las Croabas, Marina Puerto Chico and Villa Marina, Isleta Marina, Cayo Lobos, Isla Palominos, Puerto del Rey Marina
- A141 Cabo San Juan to Ensenada Honda and Isla de Vieques**  
1: 40 000 WGS 84  
Plans Puerto del Rey Marina

## VIRGIN ISLANDS

- A2 Puerto Rico to the Virgin and Leeward Islands - Passage Chart**  
1: 400 000 WGS 84  
Plans Sombrero Island
- A23 Virgin Islands and St Croix**  
1: 285 000 WGS 84  
Frederiksted (St Croix), Christiansted (St Croix), Green Cay Marina (St Croix), Port Alucroix and Limetree Bay (St Croix), Charlotte Amalie (St Thomas), Road Harbour (Tortola), St Croix
- A231 St Thomas to Virgin Gorda**  
1: 90 000 WGS 84  
Plans Charlotte Amalie (St Thomas), Cruz Bay (St John), Road Harbour, Sea Cow Bay & Nanny Cay Marina (Tortola), Benner Bay (St Thomas), Great Camanoe to Scrub Island
- A232 Tortola to Anegada**  
1: 90 000 WGS 84  
Plans Road Harbour & Approaches (Tortola), Virgin Gorda Yacht Harbour (Virgin Gorda), South Sound (Virgin Gorda), Gorda Sound (Virgin Gorda), Great Camanoe to Scrub Island, Fat Hogs Bay & Maya Cove (Tortola)
- A233 Virgin Islands**  
1: 90 000 WGS 84  
A231 and A232 printed on a double-sided sheet
- A234 Northeast Coast of St Croix**  
1: 27 700 WGS 84  
Plans Salt River Bay, Christiansted Harbour, Green Cay Marina

## LEEWARD ISLANDS

- A3 Anguilla to Dominica - Passage Chart**  
1: 400 000 WGS 84
- A4 Guadeloupe to St Lucia - Passage Chart**  
1: 400 000 WGS 84
- A24 Anguilla, St Martin and St Barthélemy**  
1: 100 000 WGS 84  
Plans Prickly Pear Cays, Shoal Bay & Island Harbour (Anguilla), Crocus Bay (Anguilla), Road Bay (Anguilla), Simpson Bay Lagoon and Baie de Marigot (Saint Martin), Great Bay (Saint Maarten), Oyster Pond (Saint Maarten), Port de Gustavia (Saint Barthélemy), Anse de Grand Fond (Saint Barthélemy)
- A25 St Christopher, St Eustatius, Nevis, Monserrat and Saba**  
1: 100 000 WGS 84  
Plans Fort Baai (Saba), Oranje Baai (St Eustatius), Basseterre Bay (St Christopher), The Narrows, Charlestown (Nevis), Saba, Montserrat
- A26 Barbuda**  
1: 45 000 WGS 84  
Plans Gravenor Bay
- A27 Antigua**  
1: 50 000 WGS 84  
Plans Mamora Bay, Falmouth & English Harbours, Nonsuch Bay, Jolly Harbour Approaches

- A271 North Coast of Antigua**  
1: 35 000 WGS 84
- A28 Guadeloupe**  
1: 150 000 WGS 84  
Plans Deshaies, Pigeon Island, Marina de Rivière Sens, Pointe-à-Pitre Approaches, Pointe-à-Pitre, Gosier, Sainte François & Marina de la Grande Saline, Port Louis, Îles de la Petite Terre
- A281 Guadeloupe - Les Saintes and Marie-Galante**  
1: various WGS 84  
Plans Les Saintes, Marie-Galante, Sainte-Anne & Anse Accul (Guadeloupe), Sainte-Marie (Guadeloupe), Petit Havre (Guadeloupe), Le Moule (Guadeloupe), Northern Approach to Pointe-à-Pitre (Guadeloupe), Grande Anse (La Désirade), Grande-Bourg (Marie-Galante)
- A29 Dominica**  
1: 75 000 WGS 84  
Plans Prince Rupert and Douglas Bay, Woodbridge Bay and Roseau Roads
- A30 Martinique**  
1: 95 000 WGS 84  
Plans St Pierre, Rade de Fort de France, Pointe du Bout, Cul-de-Sac Marin, Mouillage du François, Havre du Robert, Havre de la Trinité
- A301 Pointe du Diamant to Havre de la Trinité**  
1: 60 000 WGS 84  
Plans Havre de la Trinité, Cul-de-Sac Marin

## WINDWARD ISLANDS

- B Martinique to Trinidad Passage Chart**  
1: 750 000 WGS 84
- B1 St Lucia**  
1: 75 000 WGS 84  
Plans Rodney Bay and Yacht Harbour, Port Castries, Grand Cul de Sac Bay, Marigot Harbour, Soufrière Bay and The Pitons, Laborie Bay, Vieux Fort Bay and Anse de Sables
- B2 Barbados**  
1: 60 000 WGS 84  
Plans Port St Charles & Port Ferdinand, Speightstown, Bridgetown (North), Bridgetown (South)
- B3 The Grenadines - St Vincent to Grenada**  
1: 200 000 WGS 84
- B30 St Vincent to Mustique**  
1: 90 000 WGS 84  
Plans Chateaubelair Bay (St Vincent), Kingstown Bay (St Vincent), Calliaqua Bay & Blue Lagoon (St Vincent), Admiralty Bay (Bequia), Friendship Bay (Bequia), Baliceaux & Battowia, West Coast Of Mustique
- B31 Bequia to Carriacou**  
1: 90 000 WGS 84  
Plans Charlestown Bay (Canouan), Tobago Cays, Clifton Harbour (Union Island), Hillsborough Bay (Carriacou), East Coast of Carriacou, South Coast of Carriacou
- B311 Middle Grenadines - Canouan to Carriacou**  
1: 32 500 WGS 84
- B32 Carriacou to Grenada**  
1: 90 000 WGS 84  
Plans Tyrrel Bay (Carriacou), Grenada Bay, Grenville Harbour, Grenada - Southeast Coast, Grenada - South Coast, Saint George's Harbour
- B4 Tobago**  
1: 65 000 WGS 84  
Plans Man of War Bay, Tyrrel's Bay, King's Bay, Scarborough, Buccoo Reef, Plymouth
- B5 Martinique to Grenada, Tobago and Barbados - Passage Chart**  
1: 500 000 WGS 84
- B6 Grenada to Tobago and Trinidad**  
1: 375 000 WGS 84  
Plans Chaguaramus Bay

## VENEZUELA

- D Gulf of Paria to Curaçao - Passage Chart**  
1: 1 021 000 WGS 84
- D1 Port of Spain to Cabo Codera - Passage Chart**  
1: 583 700 WGS 84  
Plans Puerto Carenero, Port of Spain (Trinidad), Chaguaramus Bay (Trinidad)
- D10 North Coast of Trinidad & Golfo de Paria**  
1: various WGS 84  
Plans Macqueripe Bay, La Vache Bay, Maracas Bay, Las Cuevas Bay, Chupara Bay, Matelot Bay, Grande Riviere Bay, Sans Souci Bay, Toco Bay, Chaguaramas, Pointe a Pierre, Brighton, Point Fortin, Ensenada Cariaquita, Ensenada Uquirito, Ensenada Patao, Guiría, North Coast of Trinidad, Golfo de Paria
- D11 Trinidad to Carupano**  
1: 240 700 Undetermined Datum  
Plans Carupano, Bahías Puerto Santo, Playa Cacao, Ensenada Mejillones, Ensenada Pargo, Ensenada San Francisco, Ensenada Uquire, Ensenada Cariaquita, Macuro, Ensenadas Yacua, Ensenadas Patao & Uquirito, Guiría, Port of Spain (Trinidad), Chaguaramus Bay (Trinidad)
- D12 Carupano to Cumana and Isla de Margarita**  
1: 173 000 WGS 84  
Plans Pampatar, Margarita Yachting Marina, Porlamar, Bahía de Mangle, Punta de Piedras, El Saco (Isla Coche), Cumana, Laguna Grande del Obispo, Bahía Escondida
- D13 Isla de Margarita to Carenero**  
1: 255 000 Undetermined Datum  
Plans Cumana, Islas Piritu, Puerto Carenero
- D131 Puerto Mochima to Bahía de Barcelona**  
1: 63 900 WGS 84  
Plans Marina Club Nautico El Morro, Americo Vespucio Marina & El Morro, Puerto la Cruz Marina, Inset (Bahía Bergantin to Bahía de Pertigalete), Puerto Mochima National Park
- D14 Islas Los Testigos; Isla La Tortuga; La Blanquilla**  
1: various datum  
Los Testigos (1:30 000)  
Isla La Tortuga (1:60 000)  
Plans Los Testigos, Isla La Tortuga, La Blanquilla, Laguna El Carenero Anchorage
- D2 Cabo Codera to Cabo San Roman - Passage Chart**  
1: 583 700 WGS 84  
Plans Puerto Carenero, Puerto Cabello
- D21 Carenero to Punta San Juan**  
1: 244 400 WGS 84  
Plans Bahía San Juan, Puerto Chichiriviche and Parque National Morrocoy, Puerto Cabello, Puerto La Cruz, Puerto Calera, Puerto La Guaira, Carabelleda YC & Marina Mar, Puerto Azul (Naiguata), Ensa de Corsarios, Puerto Carenero, Higuerote
- D22 Isla Los Roques / Las Aves**  
1: various undetermined datum  
Las Aves (1:65 900)  
Isla Los Roques (1:89 700)  
Plans Las Aves, Isla Los Roques, Lighthouse Island (Ave de Sotovento), Long Island (Ave de Sotovento), Round Island (Ave de Sotovento), Eastern End Barlovento, Cayo de Agua, Eastern End Carenero, Puerto El Roque
- D23 Punta Aguide to Cabo San Roman and the A, B, C Islands**  
1: 255 400 WGS 84  
Plans Puerto Cumarebo, Oranjestad
- D231 Bonaire and Aruba**  
WGS 84  
Aruba (1:75 000)  
Bonaire (1:75 000)  
Plans Aruba, Bonaire, Oranjestad, Lac Baai, Kralendijk
- D232 Curaçao**  
1: 88 000 PSAD 1956  
Plans Santa Marta Baai, Piscaderabaai, Willemstad and Schottegat, Spaanse Water

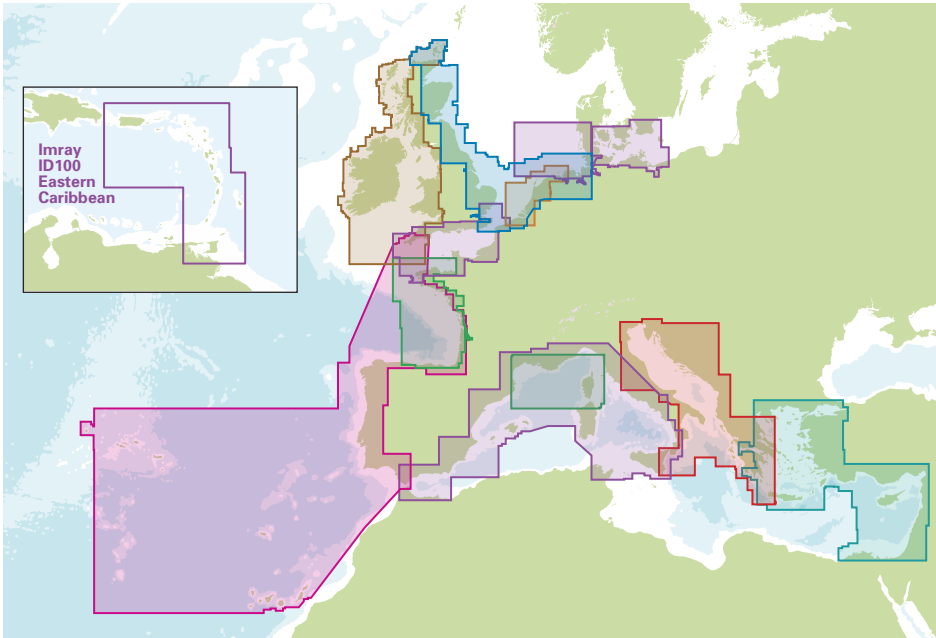




## Imray Navigator

An award-winning chart navigation package. Based on high quality raster images of Imray and selected official hydrographic office charts, the app converts your device into a chart plotter.

Free to download, with access to a free set of passage charts for the English Channel charts to explore the app and its functionality.



**Imray's award-winning raster charts plus a selected range derived from other hydrographic offices including France, the Netherlands and Germany.**

GPS position, speed over ground and course

Add, edit and share routes

Plot, edit and share waypoints

Measure distances, targets and bearings

Record tracks

View tide and currents data, with full functionality from the Imray Tides Planner app (iOS only)

AIS and NMEA integration (iOS only)

Buy annual subscriptions for quarterly updates with corrections, notes and new chart editions.

Download charts onto your device, delete and re-download at any time

Share your subscription between multiple devices.

Keep your charts even if you end your subscription, but you will no longer receive the updates once your year expires.

Full details at [www.imray.com](http://www.imray.com)



## Subscriptions available in Imray Navigator

### Imray charts

- ID10 Imray North Sea and Netherlands
- ID20 Imray English Channel
- ID30 Imray West Britain and Ireland
- ID40 Imray Atlantic France, Spain and Atlantic Islands
- ID50 Imray Western Mediterranean
- ID60 Imray Central Mediterranean
- ID70 Imray Eastern Mediterranean
- ID100 Imray Eastern Caribbean

### Derived from official Netherlands Hydrographic Office 1800 Series charts

- NL1 Netherlands

### Derived from official German Hydrographic Office (BSH) charts

- DE1 Germany North Sea
- DE2 Germany Baltic

### Derived from official French Hydrographic Office (SHOM) charts

- FR1 Bay of Biscay
- FR2 Mediterranean France & Corsica
- FR3 English Channel



## Tides Planner

The essential companion for sailors, divers, canoeists, fishermen, surfers, swimmers, photographers and anyone involved with sport or leisure at the seaside.

Instant and easy access to tide data for 8,000 world locations, no connection needed.

Free to download, see the current day's data for all locations. In-app purchases are required to access more data.



In-app purchases can be shared between devices running on the same platform.

Tide predictions

Global search

Favourite and recent ports

Minimum depth

Spring and neap tide dates

Sunrise and sunset, dawn and dusk times

Moon rise and set times, moon phases

Currents and tidal streams for UK, Ireland, France, Belgium, The Netherlands plus parts of Germany, Denmark and the North Sea



# EXPLORE

with Imray

A new online library of Imray pilot books and almanacs by renowned sailing authors and clubs, alongside a social hub to record and share your sailing adventures

## Verified cruising data

Data from Imray's library of books in a new geolocated format

Written and checked by experts with local knowledge

Pilotage information

Sailing directions

Contact details and websites

Harbour and marina information

Moorings, anchorages and berthing detail

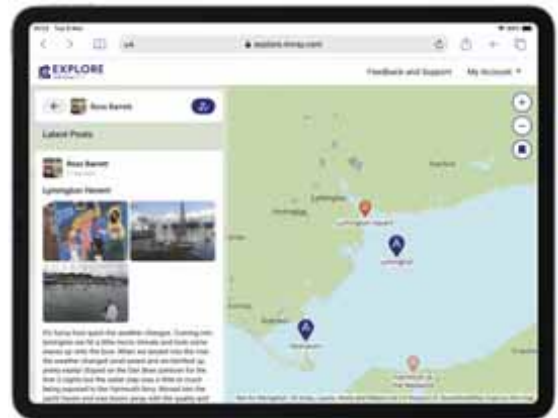
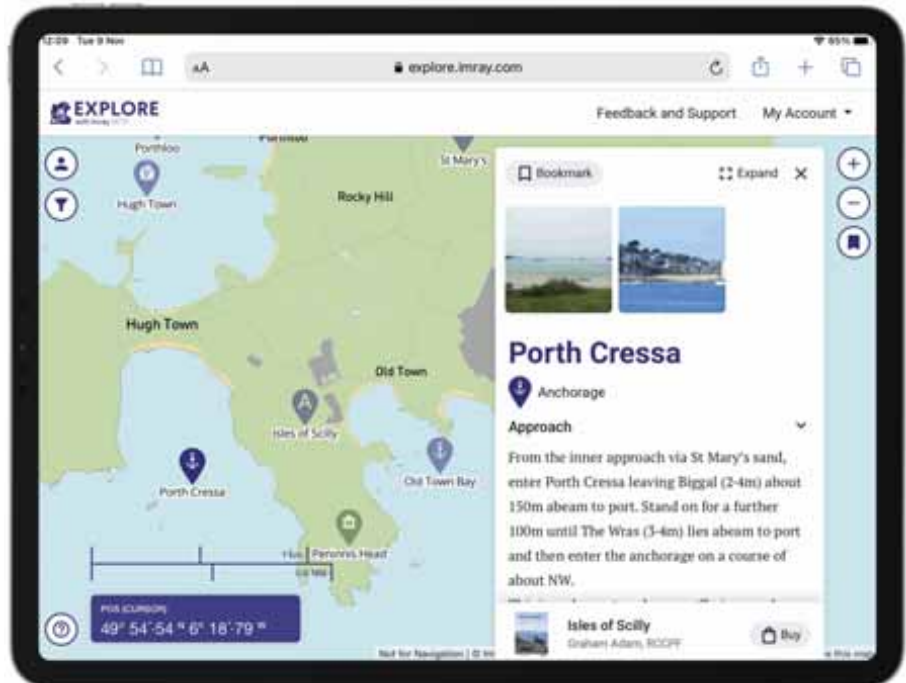
Photos

Imray plans

## Social blogging

Set up a profile and find others to follow. Use the blogging tools to tell your stories, illustrate them with images and share them with other users. Click a social post to find out what other users have been up to!

These tools are all free to all users who have completed their profile setup.



## Ready to Explore with Imray?

Monthly or annual memberships include access to unlimited Imray book data. All users can use the social blog for free.

Explore destinations, filter to show those with the facilities you need, and bookmark important locations for quick future access.

Join today to start your free trial and access 10 locations of your choice for an unlimited time period.

To see more, sign up as an Explorer.

**Free trial**

[explorewithimray.com](https://explorewithimray.com)

## Imray books

With more than 100 titles from the best sailing authors, Imray pilot books and cruising guides provide sailing directions, reference information and inspiration for cruising areas worldwide, from northern Europe and the Mediterranean to the Caribbean and Asia.

They're regarded internationally as the most comprehensive and authoritative available. The Imray guide is the first port of call for cruising yachts.

### The best sailing authors

The attention to detail and high standard of production is unrivalled and is the result of our successful long term partnerships with some of the best sailing authors.

## PDF cruising guides

We publish PDF versions of most of the Imray pilot guides. These offer the same quality and carefully-checked content of our printed pilot guides, but you can view them online on your desktop or load several onto your mobile device at once to save space in your luggage.

Click on the 'Buy PDF Book' tab on the book pages at [www.imray.com](http://www.imray.com). This will take you to the Google Play Store, which offers an option to preview before you buy.



Amongst the well known names are Tom Cunliffe, Rod and Lu Heikell, Peter Cumberlidge and Dag Pike. We have close relationships with prestigious cruising clubs including the Cruising Association, the Clyde Cruising Club and the Royal Cruising Club Pilotage Foundation, whose books cover both near and distant waters.

### Reference and navigation


There are also a handful of important titles covering various topics including navigation.

### Maps and guides

A series of maps and guides to the inland waterways of the British Isles and Europe complements the list of marine titles.


## Foreign language editions


Foreign language editions of various Imray pilots are available from publishers as follows:

 **German**  
Delius Klasing  
ABC-Straße 21  
D-20354  
Hamburg  
☎ +49 40 339 667 0  
[www.delius-klasing.de](http://www.delius-klasing.de)

 **Italian**  
Edizioni Il Frangente  
37129 Verona  
Via Gaetano  
Trezza, 12  
☎ +39 045 801 2631  
[www.frangente.com](http://www.frangente.com)

 **French**  
Fleurus Editions / Vagnon  
15-27 Rue Moussorgski  
75018 Paris  
☎ +33 1 53 26 33 35  
[www.vagnon.fr](http://www.vagnon.fr)

 **Spanish**  
Ediciones Tutor SA / Editorial El Drac SL  
c/ Impresores, 20  
P.E. Prado del Espino  
28660 Boadilla del Monte Madrid  
☎ +34 91 559 9832  
[www.edicionestutor.com](http://www.edicionestutor.com)

 **Russian**  
My Planet  
Moskva, 115093  
Bol'shaya Serpukhovskaya  
dom 32, str.2  
☎ +7 495 783 5989  
[www.myplanetbooks.ru](http://www.myplanetbooks.ru)

 **Turkish**  
Ilke Kitap  
Eski Osmali Sok  
Dilan Sit Blok D10  
Mecidiyekoy  
Istanbul  
☎ + 0 212 274 98 74  
[www.ilkekitap.com](http://www.ilkekitap.com)

## IMRAY POCKET PILOTS

Affordable PDF books, companions to the Yachting Monthly series *A Week Afloat*.

They visit some ideal destinations and suggest a one week itinerary, and include expanded sailing directions for cruising each area based on printed Imray pilot books. Familiar Imray chartlets cover marina detail and approaches, and photos add both information and colour to the downloads.

### The South of France

Lucinda Heikell

### The Ionian, Greece

Lucinda Heikell

### Corsica

Lucinda Heikell

### The west coast of Scotland

Norman Kean (Clyde Cruising Club)

### Morbihan, West France

Nick Chavasse  
(Royal Cruising Club Pilotage Foundation)



## Stay up to date

All our books are kept up to date via supplements, available to download from [www.imray.com](http://www.imray.com)



## THE CRUISING ALMANAC 2022

The Cruising Association and Imray

*The Cruising Almanac* is an annual publication first published over 100 years ago and long regarded as the perfect on board companion for cruising yachts. It covers Northwest Europe from the Shetlands and southern Norway to Gibraltar and West Ireland to the Baltic. The fully corrected text includes major revisions and additional plans, including improved coverage for the Southern North Sea. *The Cruising Almanac* comes with 2022 tide tables with data on 47 standard ports.

*The Cruising Almanac* represents remarkable value and deserves its reputation as the first choice of almanac for many cruising yachtsmen.

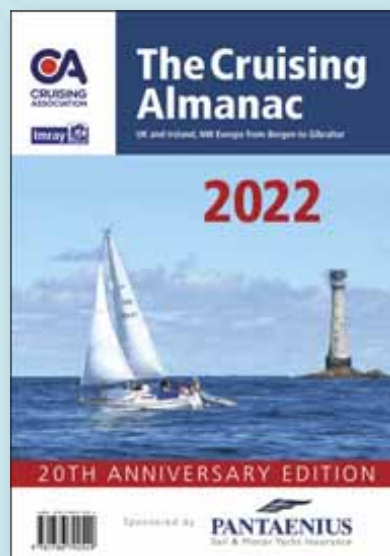
Corrections available from [www.theca.org.uk](http://www.theca.org.uk)

A4 size. Sewn paperback. 480 pages in full colour  
978 178679 254 9 2021

### CRUISING ALMANAC TIDE TABLES 2022

Also available separately from the almanac  
*Tide Tables 2022*.

978 178679 256 3 2021



NEW



### rites of passage

Various authors

Yachting Monthly, the Royal Cruising Club Pilotage Foundation and Imray have collated a dozen or so of the milestone passages through, around and across British waters that should be on every cruising sailor's to-do list. The resulting Rites of Passage is an inspiring and informative book which will help all sailors, from those new to cruising to the much more experienced, reach those milestones.

A4. Soft cover. Full colour.  
978 178679 031 6 1st ed. 2020

### WILLIAM THOMSON

William Thomson is founder of Tide School ([www.tide-school.com](http://www.tide-school.com)) and author of Book of Tides who is currently on a long-term sailing voyage with his young family aboard their yellow Prout catamaran, *Luna*.



NEW

### IMRAY EXPLORER GUIDES

William Thomson

An exciting new series of small format guides which help you better understand the sea.

Natural phenomena which have a profound impact on adventures along the coast, whether you are sailing, swimming, surfing, scuba diving or stand-up paddleboarding, are clearly explained through a seamless blend of simple descriptions and rich infographics.

William de-mystifies their workings through a mixture of straightforward language and vivid illustrations, sharing the concepts of tides for anyone to understand.

180x120 mm Soft cover. Full colour  
1st editions 2021

#### Tides

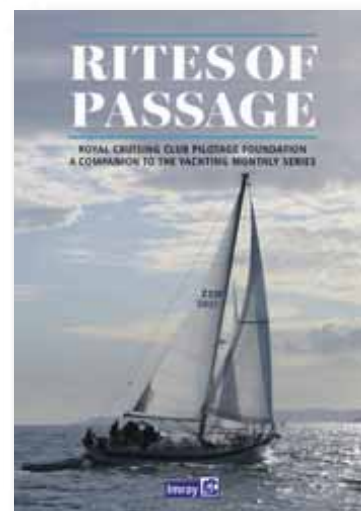
978 178679 292 1

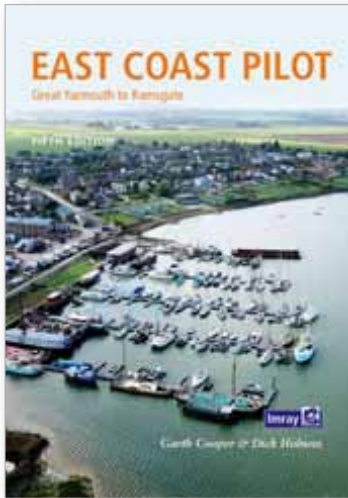
#### Tidal Streams

978 178679 294 5

#### The Moon

978 178679 296 9





## **EAST COAST PILOT** Great Yarmouth to Ramsgate Garth Cooper and Dick Holness

East Coast Pilot has become the go-to guide for cruising sailors for the waters between Great Yarmouth and Ramsgate. It covers the many harbours, rivers and creeks and reveals some of the mysteries of sailing these shallow and shifting coastal waters.

Both authors keep their boats on the East Coast and have a life-long love of the area. They enthusiastically pass on the considerable wealth of experience which they have gained over many years.

Updates at [www.eastcoastpilot.com](http://www.eastcoastpilot.com)

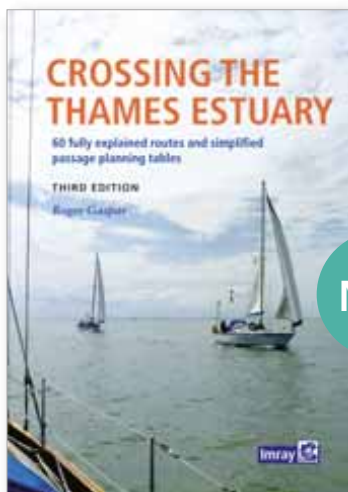
A4. 191 pp. Soft cover. Full colour.  
978 184623 953 3 5th ed. 2019

## **CROSSING THE THAMES ESTUARY** 63 routes with full passage planning tables

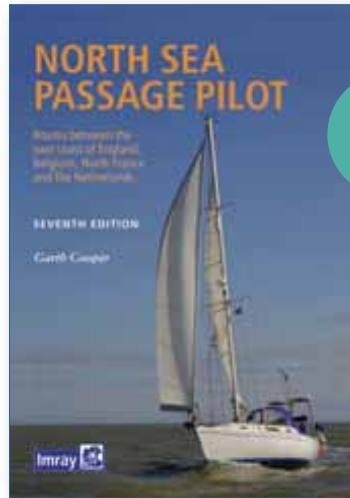
Roger Gaspar

An indispensable companion for planning Thames Estuary passages. This set of tables enables navigators to select the best routes according to tide times.

A4. 268 pp. Full colour. Spiral bound  
978 178679 319 5 3rd ed. 2022



NEW



NEW

## **NORTH SEA PASSAGE PILOT** The East Coast, Belgium and the Netherlands and passages between Garth Cooper

This brand new edition, based on Brian Navin's original, records changes including the extensive new wind farms in the Thames Estuary and off the coast of Belgium and the Netherlands.

Details of changed traffic separation schemes off the continental coast with their implications for passage making are also included.

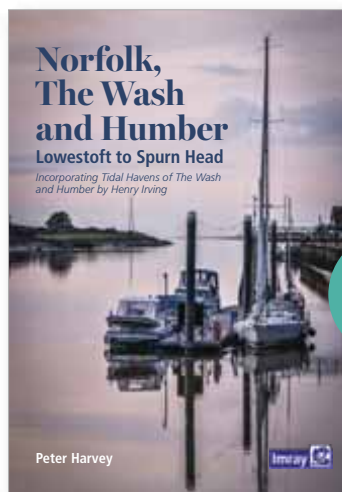
A4. 232 pp. Soft cover. Full colour.  
978 178679 066 8 7th ed. 2022

## **NORFOLK, THE WASH AND HUMBER** Lowestoft to Spurn Head

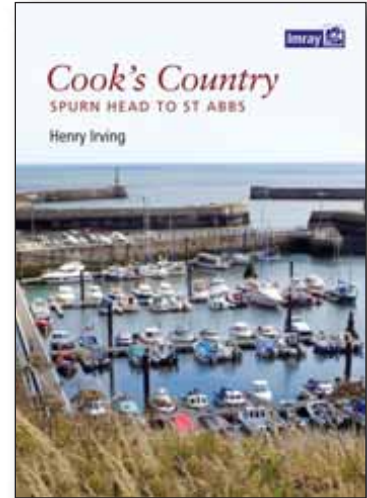
Peter Harvey

Successor to Henry Irving's long-established guide to the nooks and crannies of this fascinating corner of the east coast of England, this new title has extended coverage including the flat coasts of Norfolk, Lincolnshire and the Humber. An essential pilot for yachts visiting the drying harbours and creeks on this fascinating coast.

A4. 72 pp. Soft cover. Full colour.  
978 178679 147 4 1st ed. 2022



NEW



## **COOK'S COUNTRY** Spurn Head to St Abbs Henry Irving

*Cook's Country* is a wholly original guide to the uniquely scenic and historic coasts of North Yorkshire and Northumberland. The author's fascinating personal insights complement information on all aspects of this stretch of coastline, making this an essential addition to any sailing library.

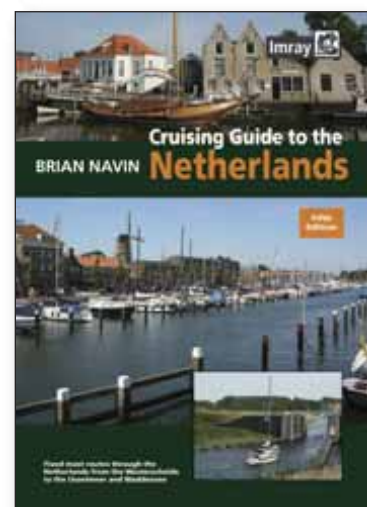
A4 76 pp. Soft cover.  
978 085288 749 2 1st ed. 2016

## **CRUISING GUIDE TO THE NETHERLANDS**

Brian Navin

This fifth edition of Brian Navin's well established guide to the rivers and canals of the Netherlands is essential for anyone approaching and cruising the standing mast routes.

A4. 180 pp. Soft cover. Full colour.  
978 184623 185 8 5th ed. 2010

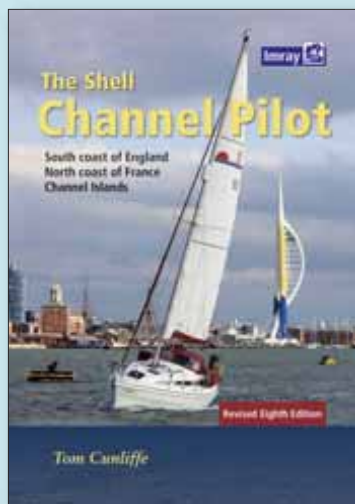




## THE SHELL CHANNEL PILOT

South Coast of England  
North Coast of France  
Channel Islands

Tom Cunliffe



For more than 80 years *The Shell Channel Pilot* has been the ultimate authority on English Channel navigation and pilotage.

'Shell' is more than a harbour guide. It also provides a reassuring hand on the shoulder for Channel navigation, with useful passage notes gleaned from the compiler's personal experience of more than 40 years running the tides and finding the eddies. His frank remarks regarding harbour and recreational facilities have long been relied upon by sailors of all generations and nationalities.

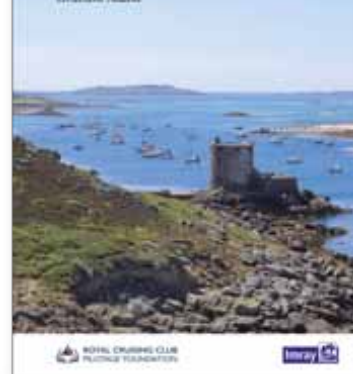
Working with harbourmasters and a dedicated group of carefully selected yachtsmen and women, Cunliffe has kept this pilot as up to date as is humanly possible. More than being technically sound, which is to be expected from a Yachtmaster Examiner, the book is also a thoroughly enjoyable read.

A4. 464 pp. Hardback. Full colour.  
978 184623 700 3 Revised 8th ed. 2021



## ISLES OF SCILLY

Graham Adam



## ISLES OF SCILLY

Graham Adam

The new edition of this comprehensive guide to the Isles of Scilly from the Royal Cruising Club Pilotage Foundation has been completely revised and updated. Throughout there are new photographs.

The background information on the islands, their history and flora and fauna has been expanded and this new edition also sees the introduction of useful waypoints.

This guide to the Scillies is a must for anyone planning an extended visit to this beautiful archipelago on the edge of the Atlantic.

A4. 100 pp. Soft cover. Full colour.  
978 178679 005 7 6th ed. 2020

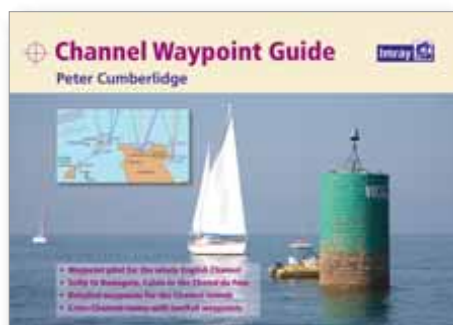
## CHANNEL WAYPOINT GUIDE

Peter Cumberlidge

Charts devised by Jane Cumberlidge

A comprehensive waypoint pilot for both sides of the English Channel, from the Isles of Scilly to Ramsgate, and Calais to the Chenal du Four. Includes the Channel Islands and over 50 cross-channel routes.

A4. Landscape. 156 pp. Soft cover. Full colour  
978 184623 383 8 1st ed 2011



## ROCKS AND RIVERS

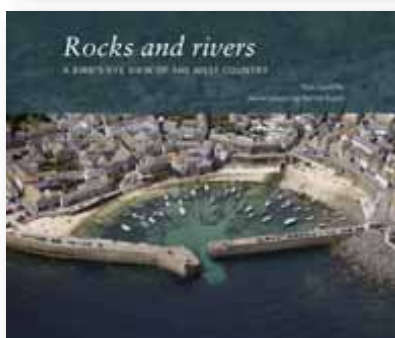
A Bird's-Eye View of the West Country

Tom Cunliffe

Aerial photos by Patrick Roach

An aerial tour of harbours between Portland Bill to the Scillies. Tom Cunliffe's lively commentary matches Patrick Roach's outstanding photos of the West Country.

250 x 210mm. 48 pp. Soft cover. Full colour  
978 184623 199 5 1st ed 2009



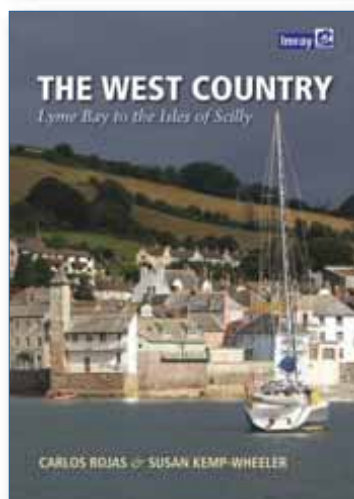
## THE WEST COUNTRY

Lyme Bay to the Isles of Scilly

Carlos Rojas and Susan Kemp-Wheeler

*The West Country* provides essential sailing directions and detailed listings of facilities together with a wealth of information for those wishing to learn about the West Country and enjoy trips ashore.

A4. 200 pp. Soft cover cover. Full colour.  
978 184623 202 2 1st ed. 2011

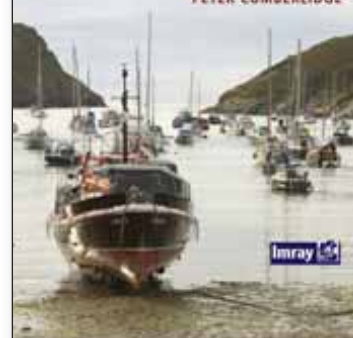


## Bristol Channel and Severn Cruising Guide

MILFORD HAVEN TO ST IVES

Including the navigable Severn to Worcester

PETER CUMBERLIDGE



## BRISTOL CHANNEL AND SEVERN CRUISING GUIDE

Milford Haven to St Ives

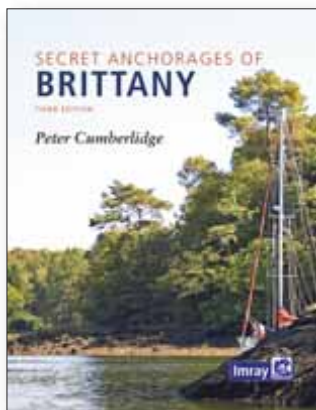
Peter Cumberlidge

This cruising guide covers all the tidal waters east of St David's Head near Milford Haven and Land's End on the Cornish side, and also includes a section on the Gloucester and Sharpness Canal and the canalised River Severn up to Worcester and Stourport.

This is not just the perfect cockpit companion but also, as would be expected this author, provides evocative and informative reading about the places covered by the book.

A4. 224 pp. Soft cover. Full colour.  
978 085288 979 4 1st ed. 2008





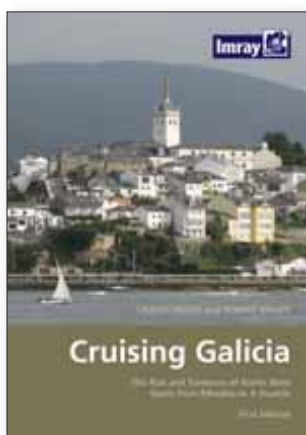
## SECRET ANCHORAGES OF BRITTANY

Peter Cumberlidge

Covering the north and south Brittany coasts, *Secret Anchorages* is not just a pilot but also a cruising companion providing background information on a multitude of anchorages that are not described in other pilot books. The 3rd edition includes many stunning new photos as well as revised plans and text.

246 x 189mm. 295 pp. Hard cover.

Full colour. 978 184623 815 4 3rd ed. 2016



## CRUISING GALICIA

Carlos Rojas and Robert Bailey

Northwest Spain from Ribadeo to Baiona. The authors spent several seasons cruising in the area and using their local connections produced a guide that provides all the information necessary for yachts spending time visiting the rías and ports of Galicia. Annotated town plans show facilities and recommended restaurants and side panels provide interesting reading on places to visit, local customs and features of interest.

A4. 280 pp. Soft cover. Full colour.

978 184623 041 7 1st ed. 2008



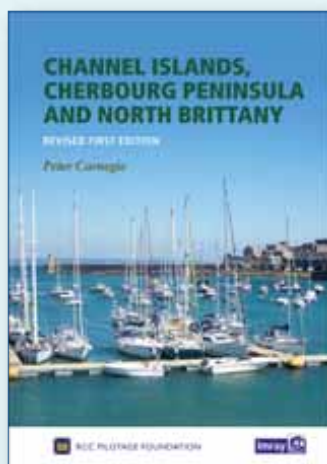
## ROYAL CRUISING CLUB PILOTAGE FOUNDATION

The Royal Cruising Club Pilotage Foundation was established in 1976 and is a registered charity with the charitable objective 'to advance the education of the public in the science and practice of navigation'.

The Foundation's principal activity is to collate and publish pilotage information for the benefit of cruising sailors worldwide. A team of dedicated authors and editors, all of whom are experienced sailors, work with the Foundation's publishers to update and develop its portfolio of pilot books and cruising guides.

The range covers popular coasts of France and Spain, the Atlantic Islands, the Baltic Sea and Norway and also less frequented areas like the Arctic Ocean and Chile.

[www.rccpf.org.uk](http://www.rccpf.org.uk)



## CHANNEL ISLANDS, CHERBOURG PENINSULA, NORTH BRITTANY

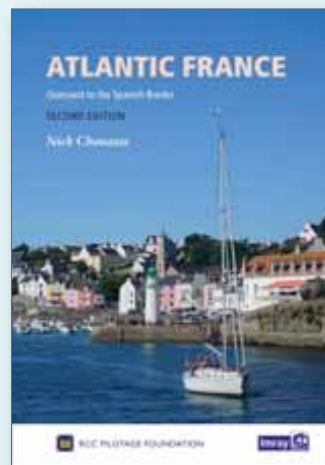
St Vaast La Hougue to Ouessant  
and the Channel Islands

Peter Carnegie

This revision updates the combined volume for this area which encompasses the Channel Islands and extends from St Vaast La Hougue on the east of the Cherbourg peninsula, and works westwards along the Normandy and Brittany coasts to Ouessant. Coverage includes the Plateau des Roches Douvres as well as detailed sections on the navigable rivers.

A4. 392 pp. Hard cover. Full colour.

978 184623 943 4 Rev 1st ed. 2018



## ATLANTIC FRANCE

Ouessant to the Spanish border

Nick Chavasse

Covering the whole Atlantic coast of France, from Ouessant in the north to Hendaye on the Spanish border, *Atlantic France* is the authoritative cruising companion for this long and varied coastline with its sometimes-daunting tides and currents, and its publication has been welcomed both by first time visitors who are enjoying their first taste of the region and by old hands who are revisiting their favourite haunts.

A4. 360 pp. Hard cover. Full colour.

978 184623 744 7 2nd ed. 2018



## SOUTH BISCAY

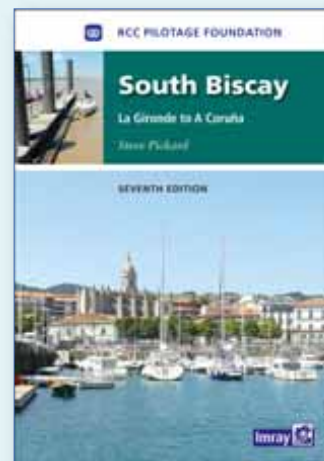
La Gironde to A Coruña

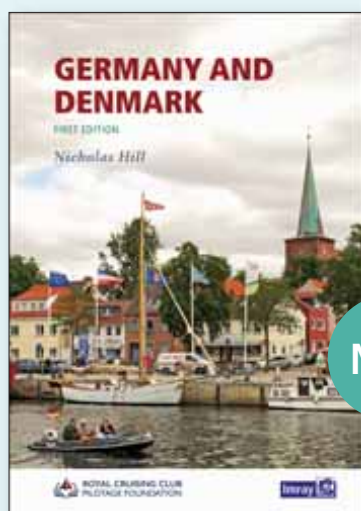
Steve Pickard

This seventh edition of the Pilotage Foundation's *South Biscay* pilot covers the sandy coasts of southwest France and the long Biscay coast of Spain from the Gironde to A Coruña in Galicia.

A4. 205 pp. Hard cover. Full colour.

978 184623 375 3 7th ed. 2012





NEW

## GERMANY AND DENMARK

Nicholas Hill

This is the successor to Brian Navin's popular guide. Covering the sometimes-challenging cruising grounds along the North Sea coasts, then via the Kiel Canal, Eider, Limfjord and Skagerrak to the more tranquil fjords and islands in the east of the region, this completely revised and restructured edition provides all the information needed for sailing this wonderful area.

It details harbours and anchorages area by area rather than along specific routes. Plans are in familiar Imray style and incorporate up to date hydrographic information along with additional details for small craft. A wealth of photographs help to illustrate key features and places.

A4. 272 pp. Soft cover. Full colour.  
978 178679 006 4 1st ed. 2022

## ATLANTIC SPAIN AND PORTUGAL

Cabo Ortegal (Galicia) to Gibraltar

Henry Buchanan

The classic guide to this varied coast which includes the rias of Galicia, the estuaries of the Douro and Tejo with Lisbon, the Algarve and then the coast of Andalusia down to Gibraltar. It's the essential companion for yachts making passage to the Mediterranean or onwards to the Canaries before an Atlantic crossing and also a comprehensive cruising companion for anyone visiting the delightful cruising grounds of Galicia and beyond.

A4. 360 pp. Hard cover. Full colour.  
978 184623 964 9 8th ed. 2019



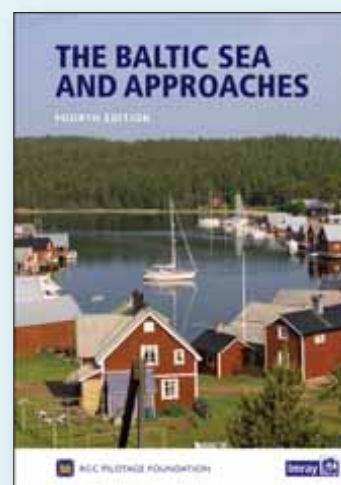
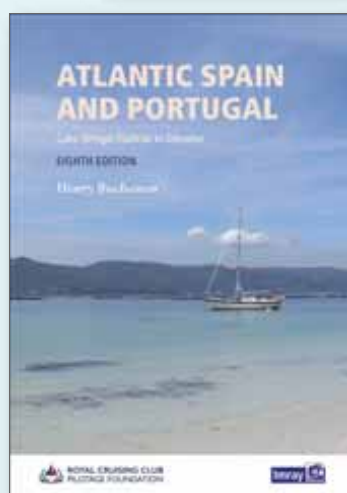
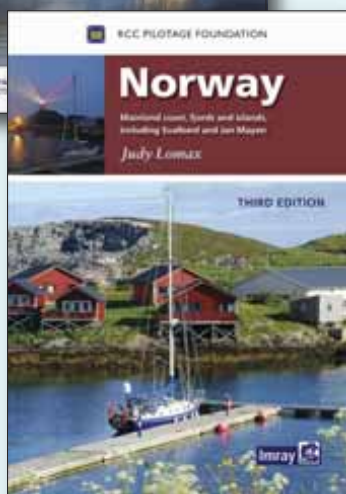
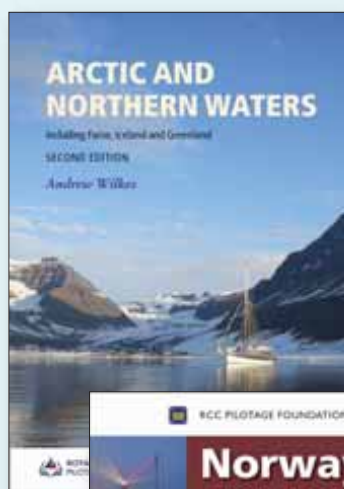
## ARCTIC AND NORTHERN WATERS

including Faroe, Iceland Greenland

Andrew Wilkes

This handbook covers the Northwest and Northeast Passages through the Arctic Ocean as well as Faroe, Iceland and Greenland. Incorporating information collected on a number of voyages over recent years this work is an impressive resource which brings together experience and background data on a region that is not only in the news but increasingly accessible to cruising yachts.

A4. 420pp. Hard cover. Full colour  
978 184623 931 1 2nd ed. 2020



## THE BALTIC SEA AND APPROACHES

Denmark, Germany, Sweden, Finland, Poland, the Baltic States and Russia,

The only general compendium on the Baltic Sea available in English. The work has been completely revised by a team of contributors, and this enlarged fourth edition includes improved coverage of the West coast of Sweden, the Gulf of Bothnia and the Baltic States. Additional colour plans and new photographs have been incorporated in the revision.

A4. 376 pp. Hard cover. Full colour.  
978 184623 666 7 4th ed. 2017



## NORWAY

Oslo to Cape North and Svalbard

Judy Lomax

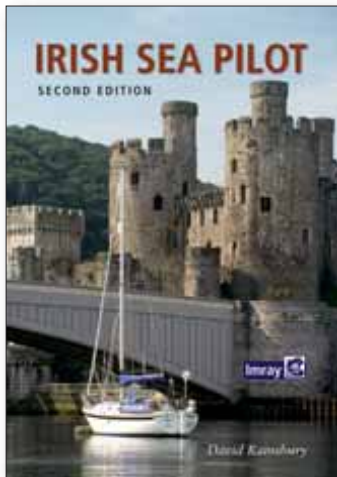
This pilot covers the long and complex coast of Norway, from the Swedish border in the Skagerrak to the Russian border, including the Lofoten and Vesterålen islands, the Arctic archipelago of Svalbard and the remote volcanic island of Jan Mayen.

Fully illustrated, mainly with the author's own photographs, the work is divided into a general introduction to Norway and eight coastal sections, identifying cruising routes and describing 1,000 islands, fjord and mainland harbours and anchorages.

This third edition contains numerous revisions, additional plans and information on anchorages not included in the previous edition.

A4. 328 pp. Hard cover. Full colour.  
978 184623 699 0 3rd ed. 2016





## IRISH SEA PILOT

David Rainsbury

This well established pilot covers both sides of the Irish Sea from Milford Haven to Portpatrick, and Rathlin Island to Carnsore Point. The sailing directions and descriptions cover all the places that provide shelter. Pilotage notes are supported by clear full colour plans, information on wind farms and photos.

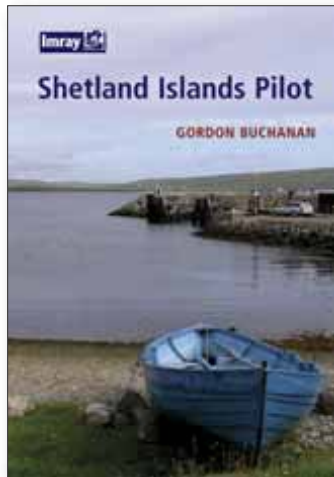
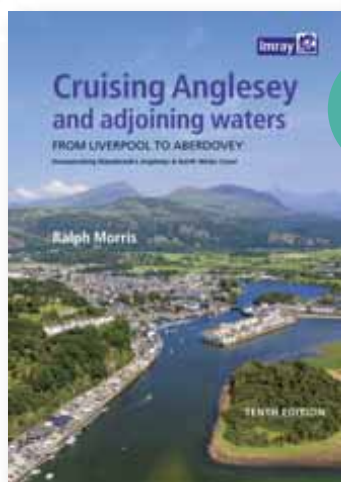
A4. 240 pp. Soft cover. Full colour  
978 184623 591 7 2nd edition 2015

## CRUISING ANGLESEY AND ADJOINING WATERS

Ralph Morris

This fully updated, tenth edition is spiral-bound for easy cockpit use, with full colour chart graphics, aerial views and photos. It also makes reference to the most noteworthy event in recent years - the wholesale destruction of Holyhead Marina by Storm Emma in 2018.

A4. 240 pp. Spiral bound. Full colour.  
978 178679 182 5 10th ed. 2021



## SHETLAND ISLANDS PILOT

Gordon Buchanan

The author knows the islands from visits over many years and presents detailed pilotage information on reaching the Shetlands. Fully illustrated with colour photographs and plans.

A4. 112 pp. Soft cover. Full colour.  
978 0 85288 977 0 1st ed. 2009



## LOCHS AND LIGHTS

The West Coast of Mainland Scotland

Patrick Roach and Gordon Buchanan

One of a series of attractive tours of coastlines using views from the air. These wonderful views give an idea of the drama and variety of the Scottish West coast. For anyone at sea as well as walkers and other landside visitors, *Lochs and Lights* is the ideal companion.

250 x 210mm. 64 pp. Soft cover. Full colour  
978 184623 169 1st ed. 2010

## IRISH CRUISING CLUB

### CRUISING IRELAND

Written by Mike Balmforth and Norman Kean, editor of the ICC's Sailing Directions, Cruising Ireland is intended as a companion to the pilot books.

A4. Hard Cover. Full Colour. 978 95581 993 3  
1st ed. 2012



### EAST & NORTH COASTS OF IRELAND SAILING DIRECTIONS

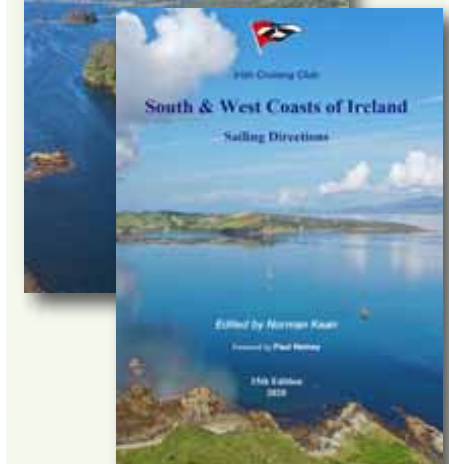
Covering Kilmore Quay and Carnsore Point, northward via Malin Head to the Bloody Foreland. Describes 163 ports, harbours and anchorages, 264 sea level and 115 aerial photographs, including 61 new drone photographs

A4 224 pp Soft cover. Full colour.  
978 0955819995 14th ed. 2020

### SOUTH & WEST COASTS OF IRELAND SAILING DIRECTIONS

350 ports, harbours and anchorages, described passage planning, pilotage, tides, dangers, lights and marks, on shore facilities, latest information from INFOMAR, new chapter on crossings to and from England and Wales.

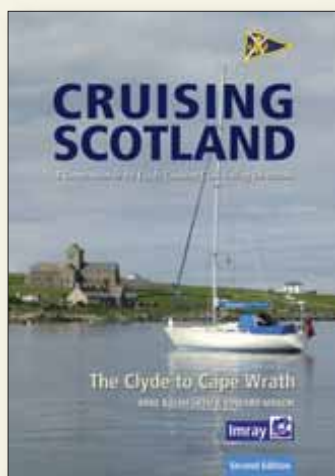
A4 Soft cover. Full colour.  
978 0955819988 16th ed. 2020







## CLYDE CRUISING CLUB SAILING DIRECTIONS AND ANCHORAGES



### CRUISING SCOTLAND

**The Clyde to Cape Wrath – A companion to the Clyde Cruising Club Sailing Directions**

Mike Balmforth & Edward Mason

This lavishly illustrated book has been designed as a companion to the Clyde Cruising Club's Sailing Directions and covers the Scottish west coast from the Clyde to Cape Wrath and all the outlying islands.

It was first written by the late CCC Journal Editor, Mike Balmforth, in conjunction with the Editor of the Sailing Directions, Edward Mason, who has now prepared this updated first edition in collaboration with Imray.

Cruising Scotland provides additional information, points of interest and many photographs and is a fascinating and invaluable addition to the Club's publications. No yacht cruising the Scottish west coast should be without a copy.

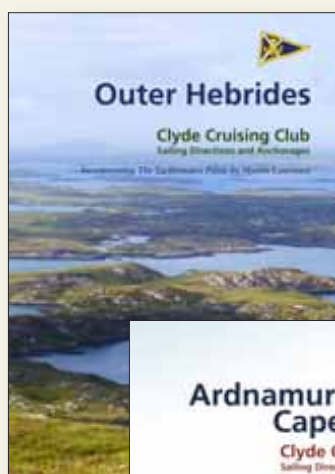
A4. Hard cover. Full colour  
978 184623 697 6 2nd ed. 2015

### KINTYRE TO ARDNAMURCHAN

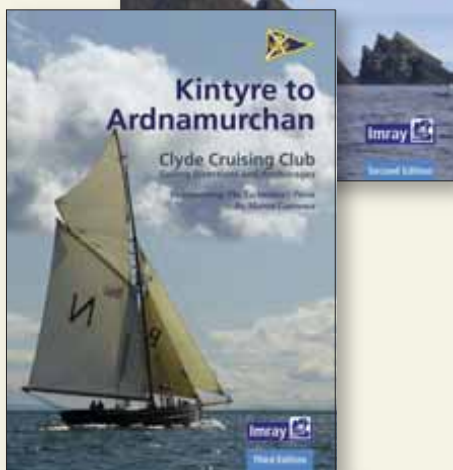
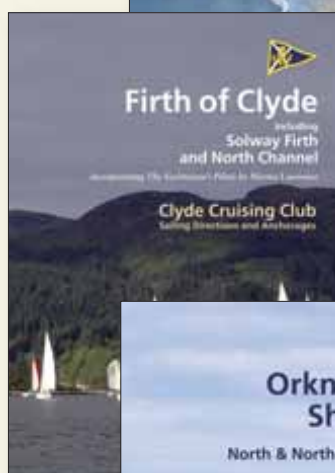
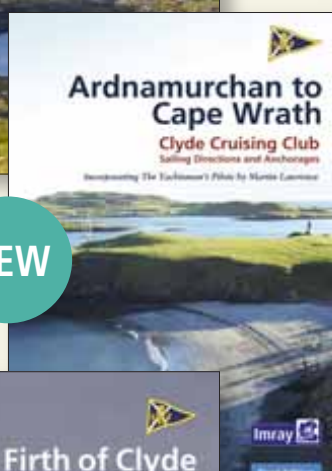
**Incorporating The Yachtsman's Pilot by Martin Lawrence**

This new edition incorporates updated plans and new ground level photographs. The text has been brought up to date with the latest corrections and contributions from users. It offers the best pilotage that is available for the west of the Kintyre peninsula, Islay, Jura, Mull, the Small Isles, and adjacent coasts north to Fort William and Ardnamurchan.

A4. 216pp. Soft cover/spiral binding  
Full colour 978 178679 166 5 3rd ed. 2020



NEW



### OUTER HEBRIDES

**Incorporating The Yachtsman's Pilot by Martin Lawrence**

The Western Isles from Lewis to Berneray.

This thoroughly revised second edition contains updates to the text, many based on reports as well as official notices. The plans have been improved by the inclusion of the latest Antares surveys.

A4. 148pp. Soft cover/spiral binding.  
Full colour 978 184623 903 8 2nd ed. 2017

### ARDNAMURCHAN TO CAPE WRATH

**Incorporating The Yachtsman's Pilot by Martin Lawrence**

The north section of the West Coast of Scotland from Ardnamurchan Point to Cape Wrath, including the whole of Skye and the Small Isles.

A4. 168pp. Soft cover/spiral binding.  
Full colour 978 178679 323 2 3rd ed. 2022

### FIRTH OF CLYDE

**including Solway Firth and North Channel**

**Incorporating The Yachtsman's Pilot by Martin Lawrence**

The third edition of the Clyde Cruising Club's Sailing Directions contains numerous revisions, and amendments to plans.

Firth of Clyde extends beyond its titled area to the coast of Northern Ireland (Rathlin Island to Belfast Lough) and on the Scottish side southwards from Stranraer to Portpatrick and beyond to the Solway Firth and Cumbria.

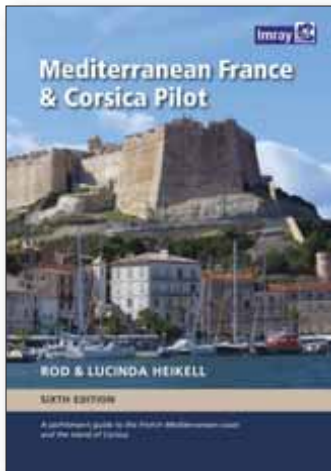
A4. 150pp. Soft cover/spiral binding.  
Full colour 978 178679 164 1 3rd ed. 2020

### ORKNEY & SHETLAND

**including North & Northeast Scotland**

This volume for the Orkney and Shetland Islands, including Fair Isle, covers the 'jumping off' harbours on the south side of the Pentland Firth and the mainland coast of Scotland between Inverness and Cape Wrath. The section on the North coast of Scotland draws on work previously published from Martin Lawrence.

A4. 150pp. Soft cover/spiral binding.  
Full colour 978 178679 161 0 2nd ed. 2020



## MEDITERRANEAN FRANCE & CORSICA PILOT

Rod and Lucinda Heikell

This is a comprehensive companion to the long coastline which ranges from Spain and the edge of the Pyrenees to the Alpes Maritimes and Italy. It covers the flat country of Languedoc-Roussillon, the coast of the Golfe du Lion, the Rhône delta and the Camargue, the industrial Golfe de Fos, the Côte d'Azur and the French Riviera and Monaco. The island of Corsica and the waterways that run behind the coast linking the Canal du Midi and the étangs to the Rhône are covered in separate chapters.

The authors spent the summer and autumn of 2016 cruising in Corsica and then across to the Golfe du Fos where they left *Skylax* for the winter. During their travels they visited a large number of harbours and anchorages, collecting the latest information and taking new photographs. There are new aerial photos for many places and in particular for ports and harbours in Languedoc – Roussillon. This major 2017 edition contains substantial changes to the content.

A4. 360 pp. Hard cover. Full colour.  
978 184623 849 9 6th ed. 2017



## ITALIAN WATERS PILOT

Rod and Lucinda Heikell

*Italian Waters Pilot* is the only guide for yachtsmen in English that covers the coasts of the Tyrrhenian Sea, Sardinia, Sicily, the Ionian 'hee' and Malta in one volume.

This new tenth edition builds on first-hand research by the authors through the Tuscan islands, along the Tyrrhenian and Ionian coasts, to Sardinia and Sicily, Malta and Gozo.

Numerous revisions have been made throughout, with the text, plans and photographs undergoing a complete overhaul. Care has been taken to research the details of marina developments. Where it has been available information is given on proposed changes and extensions to yacht harbours. Marine reserves are now an important feature of the coasts and off-lying islands, particularly in Sardinia and Sicily, and this edition provides updated details of the latest regulations. Climate change and

extreme weather events are becoming a major issue and this edition includes a section on the how climate change might affect sailing in the Mediterranean.

*Italian Waters Pilot* is the last word on the area for yachts cruising there and on their way between western and eastern parts of the Mediterranean.

Rod and Lucinda Heikell have also authored companion guides on France, Greece and Turkey which are acclaimed as the best pilot books currently available.

Recommended by the Royal Cruising Club and The Cruising Association.

A4. 508 pp. Hard cover. Full colour.  
978 178679 090 3 10th ed. 2019



## GREEK WATERS PILOT

Rod and Lucinda Heikell

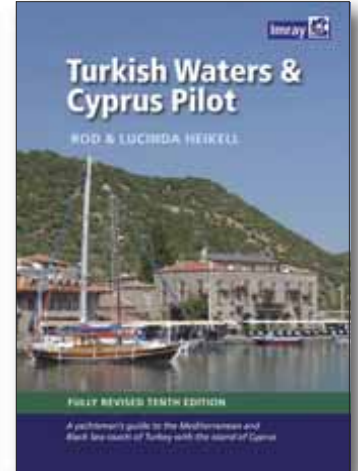
*Greek Waters Pilot* is the definitive cruising guide to the coasts and islands of Greece. It covers the entire area from the Ionian Islands to the Aegean, Rhodes and Crete and includes details of over 450 harbours in a single volume. *Greek Waters Pilot* has been painstakingly compiled from the author's own survey work and the latest first-hand information.

The organisation of so much detail within the confines of a single volume is an impressive achievement and has been the basis of *Greek Waters Pilot's* status as the indispensable guide for anyone sailing around Greece.

This 13th edition contains detailed updating of every part of the guide, but in particular areas of the Ionian, Saronic and northern Greece, visited by the authors since the last edition, have major revisions. Many new photos, often from the air, have been introduced. There are also many new harbour plans.

'The fascinating background information with historical and mythological anecdotes gives this book a richness too often missing from bald pilot guides. It would be inconceivable to visit this area without the detailed knowledge provided by Rod Heikell's enviable experience of Greek cruising.'

*Royal Cruising Club*



'Anyone who has cruised around Greece will be grateful to Rod Heikell for compiling what has become 'the bible' for pilotage in these waters. If you are planning on cruising in this delightful region, Heikell is invaluable...'

*Cruising Association*

'... his excellent pilots are the yardstick by which all others are measured and it's with justification that they are often referred to as 'the bible'.'

*John Goode, Sailing Today*

A4. 576 pp. Hard cover. Full colour.  
978 184623 950 2 13th ed. 2018



## TURKISH WATERS & CYPRUS PILOT

Rod and Lucinda Heikell

*Turkish Waters and Cyprus Pilot* covers the entire coast of Turkey from the Black Sea down the Aegean Coast and around to the Syrian border. The coast, ports and marinas of the island of Cyprus are also described.

There are few more beautiful cities in the world that it is possible to sail into the heart of, but that is what the authors were able to do in Istanbul while researching this the tenth edition. Their research also took them south as far as Göcek and to Cyprus.

Much has changed, with new marinas completed and more under construction, but much has also stayed the same, namely the warmth and hospitality of the people you encounter.

This new edition includes all the latest information and marina developments, with new plans and photos, many of which were taken by the authors.

*Turkish Waters and Cyprus Pilot* is considered the essential companion to sailing these waters.

I would take his *Turkish Waters and Cyprus Pilot* as my book on the Desert Island.

*Michael Buerk, Yachting Monthly*

... a must for anyone sailing in this area.  
*The Little Ship*

A4. 400 pp. Hard cover. Full colour.  
978 184623 826 0 10th ed 2018





## ROD AND LUCINDA HEIKELL

Rod Heikell has spent nearly 40 years cruising the coasts and islands of the Mediterranean. He is the acknowledged expert on sailing in the Mediterranean. His pilots have become the model for others and are often referred to as 'the bible'. He sails *Skylax*, a 46' New Zealand-Warwick-designed boat, with his wife and co-author Lucinda.



Photo: Andreas Fritsch

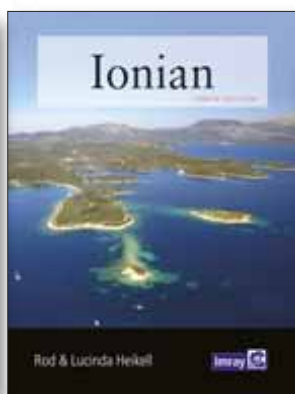
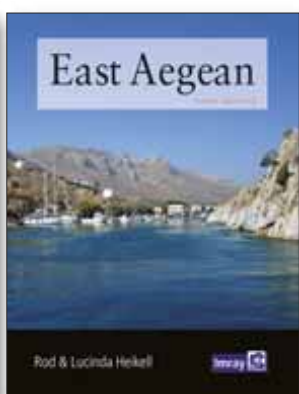
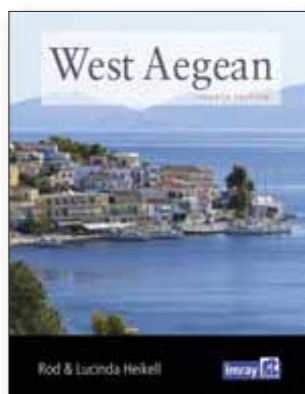
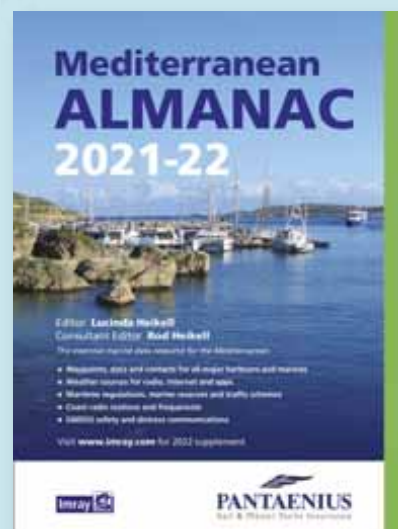
## MEDITERRANEAN ALMANAC 2021-22

Edited by Rod and Lucinda Heikell

The essential companion and general handbook for the Mediterranean, the *Imray Mediterranean Almanac 2021-22* is published in full colour. All the harbour plans appear in the familiar Imray livery which adds clarity to their use. The *Imray Mediterranean Almanac* is the ideal compendium of information for yachts on passage through the Mediterranean.

An update will be available via [www.imray.com](http://www.imray.com) in 2022.

210 x 280mm. 448 pp. Soft cover. Full colour.  
978 178679 231 0 2020



## WEST AEGEAN

Rod and Lucinda Heikell

*West Aegean* is a cruising guide to the Attic coast, Eastern Peloponnese, Western Cyclades and Northern Sporades. It is the ideal companion for charterers and flotilla sailors providing not only clear pilotage but also background information on visiting Greece, notes on history, food and wine and places to visit on the coast and inland.

It runs from Corinth to Cape Sounion. Covers Aigina and Poros in the Saronic Gulf, and down the eastern side of the Peloponnese, including Idhra and Spetsai, to Monemvasia and Cape Malea. It includes the Western islands of the Cyclades: Kea, Kithnos, Serifos, Sifnos and Milos.

This new edition has been thoroughly updated and throughout there are many new and revised plans and photos

246 x 189mm. 316 pp. Soft cover. Full colour.  
978 178679 087 3 4th ed. 2019

## EAST AEGEAN

Rod Heikell

*East Aegean* covers the Greek Dodecanese islands and the Turkish coast from the Samos Strait as far east as Kas and Kekova. This fully revised and expanded third edition is packed with useful background information for the

cruising yacht and provides all the essential information from getting to the area, formalities and sailing in Greece and Turkey to detailed pilotage on harbours and anchorages.

246 x 189mm. 310 pp. Soft cover. Full colour.  
978 178679 178 8 3rd ed. 2021



## IONIAN

Rod and Lucinda Heikell

Like its companions, *West Aegean* and *East Aegean*, *Ionian* contains detailed information on many of the smaller harbours and anchorages which cannot be covered as comprehensively in the Heikell's major guide, *Greek Waters Pilot*. These handy cruising companions are ideal for charterers and flotilla sailors who are in the area for a short time but to make the best of it need all the essential background information on places to visit, history, food and travelling in Greece at their fingertips. *Ionian* covers the coasts and islands south from Corfu, southwards to Finakounda and eastwards to Mesolongion. *Ionian* is essential on-board reference.

This new 9th edition has been revised thoroughly throughout. The authors have updated the text and plans, and added lively new photographs.

246 x 189mm. 280 pp. Soft cover. Full colour.  
978 1 78679 177 1 10th ed. 2020



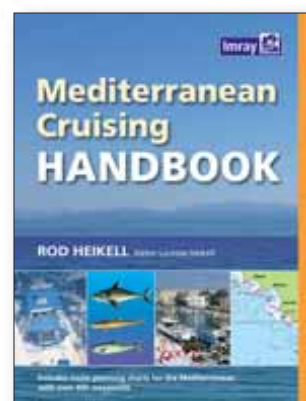
## MEDITERRANEAN CRUISING HANDBOOK

Rod Heikell

This fully updated 6th edition has had a complete facelift and is now published in full colour in a new format. Throughout, the work has been updated, and in places expanded. It now includes a list of useful waypoints and routes for the entire Mediterranean which are shown on overprinted charts folded into the back of the book.

The *Mediterranean Cruising Handbook* is a companion to the *Imray Mediterranean Almanac* and provides information on climate, equipment, radio, navigation, routes to the Mediterranean, history, marine life, food and basic information on each Mediterranean country.

246 x 189mm. 280 pp. Soft cover. Full colour.  
978 184623 170 4 6th ed. 2012







## MEDITERRANEAN SPAIN

Strait of Gibraltar to the French border  
Steve Pickard

The second edition of this well-received title from the Royal Cruising Club Pilotage Foundation covers the entire Mediterranean mainland coast of Spain from Gibraltar to the French border. This is the only detailed pilot for the Spanish Mediterranean coast running up from Gibraltar to the border with France. It covers a varied cruising area that includes the mountain-backed Costas del and Sol and Blanca, the expansive lagoon of the Mar Menor, the low-lying Ebro delta and the rugged Costa Brava. In between are several great cities including Malaga, Valencia, Tarragona and Barcelona, the Catalan capital. The volume opens with Gibraltar and La Línea.

A4. 432pp. Hard cover. Full colour.  
978178679 183 2 2nd ed. 2021



## ISLAS BALEARES

Ibiza, Formentera, Mallorca  
David and Susie Baggaley

The only comprehensive pilot guide to the islands in English, *Islas Baleares* the eleventh edition demonstrates the lasting appeal of this popular cruising ground, both to those cruising their own boats and to those who are visiting the islands on a yacht charter.

A4. 308 pp. Hard cover. Full colour.  
978 184623 940 3 11th ed. 2018



## NORTH AFRICA

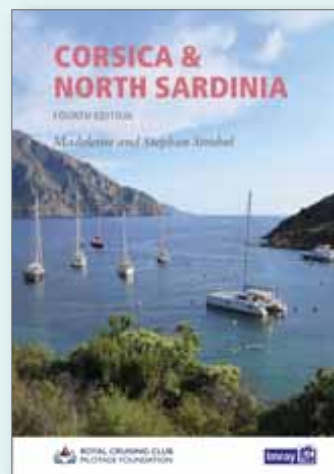
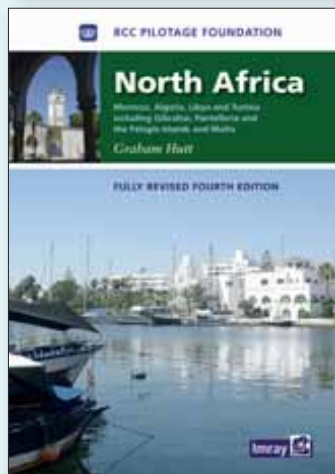
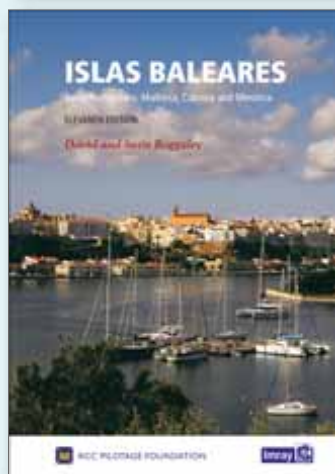
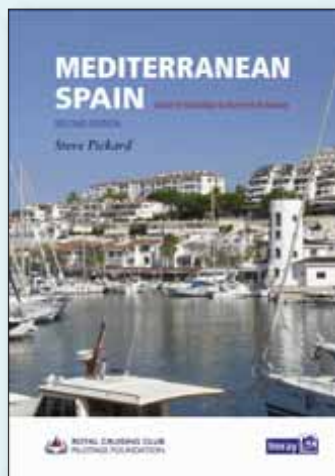
Morocco, Algeria, Tunisia,  
Malta and Libya

Graham Hutt

The 4th edition of this popular pilot includes updated text, revised harbour plans and new photos have been added. Graham Hutt lives in Andalucia and is an expert on the Mahgreb. His knowledge of the Islamic culture and history is passed on in the introductory sections of this unique pilot.

A4. 308 pp. Hard cover. Full colour.  
978 184623 281 7

4th ed. 2010



## CORSICA AND NORTH SARDINIA

Madeleine and Stephan Strobel

A well-established guide which covers the area's varied cruising grounds, from the sometimes exposed and often dramatic bays of Corsica's west coast to the more protected and gentle cruising on its eastern side, to the rich choice of anchorages in the Bouches de Bonifacio and on Sardinia's island-studded north coast. This whole region is justifiably popular with cruising sailors, particularly in the summer season.

Corsica and North Sardinia is the ideal guide, either for charter skippers or longer-term cruising sailors who want to make the most of this very special corner of the Mediterranean.

A4. 215 pp. Soft cover. Full colour.  
978 17867 9073 6 4th ed. 2019



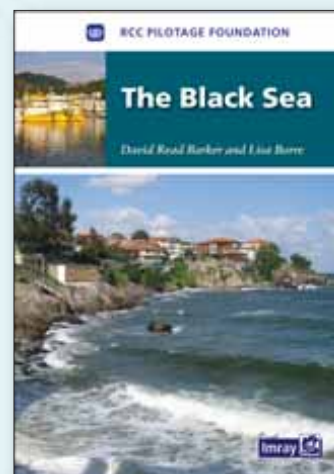
## THE BLACK SEA

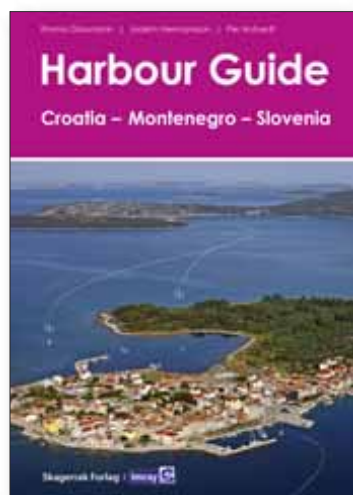
David Read Barker and Lisa Borre

Based on previously published cruising notes this guide provides sailing directions for all the countries surrounding the Black Sea.

Packed with useful background information and supported by the RCCPF's access to the latest and often changing information this is an essential companion for anyone venturing north from the Bosphorus.

A4. 200 pp. Soft cover. Full colour  
978 184623 412 5 1st ed. 2012





### HARBOUR GUIDE CROATIA / SLOVENIA / MONTENEGRO

E Glaumann, J Hermansson, &  
P Hotvedt

The English language edition of Skagerak Forlag's guide. The Norwegian publisher has already established a comprehensive series of harbour guides for the Baltic Sea which concentrate on providing the user with the clearest possible information for entering harbours and anchorages. This joint venture extends the series to the Adriatic.

Specially commissioned aerial photos for each harbour are annotated to show approach lines and anchoring places and these are supported by clear harbour plans and sailing directions.

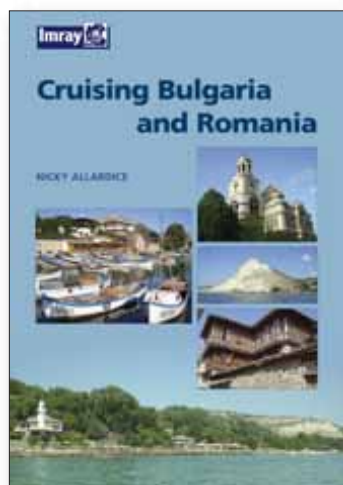
330 x 233mm. 316 pp. Spiral bound. Full colour.  
978 184623 745 9 1st ed. 2016

### MEDITERRANEAN WEATHER HANDBOOK FOR SAILORS

Roberto Ritossa

An indispensable reference providing a general understanding of the various phenomena concurring to determine weather in the Mediterranean as well as useful forecasting aids. It is written for sailors, not meteorologists; theory is kept to a minimum, while every effort is made to provide clear interpretative tools that are helpful in understanding actual weather and forecasting. Roberto Ritossa is a meteorology expert and this handbook is a result of many years research on Mediterranean weather patterns.

246 x 189mm. 150 pp.  
Soft cover. Full colour.  
978 184623 597 9 2nd ed. 2014

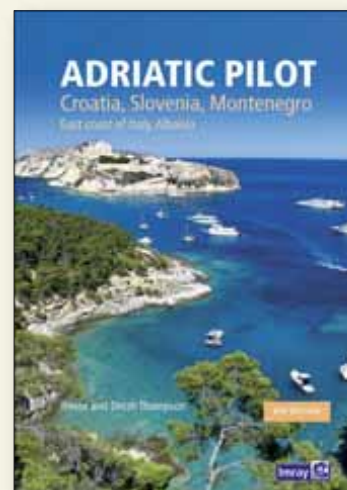


### CRUISING BULGARIA AND ROMANIA

Nicky Allardice

A guide to the Black Sea coasts of Romania and Bulgaria including the Danube Delta. Nicky Allardice has worked for many years in Bulgaria and has an unrivalled knowledge of the area and how it has developed since 1989 when these countries returned to the mainstream of Europe. The guide contains all the important navigational information details of harbours which, are all fully illustrated. It also has lots of information on what to do, where to go and tips about visiting those countries.

A4. 108 pp. Soft cover. Monochrome.  
978 0 85288 910 7 1st ed. 2007



### ADRIATIC PILOT

Trevor and Dinah Thompson

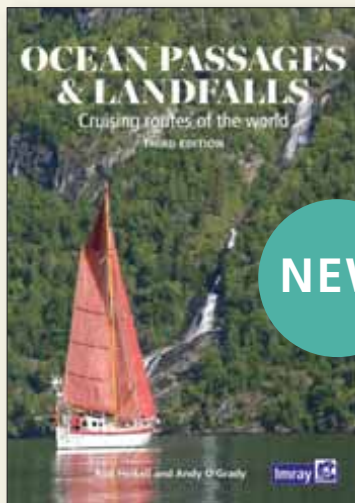
In publication for over thirty years, Adriatic Pilot remains the only single volume to cover the whole region, from Albania and the heel of Italy in the south to Venice and Slovenia in the north. The ever-popular cruising ground of Croatia is covered extensively in four separate chapters.

This 8th edition has been fully revised to include new information on marinas, visitor moorings and anchorages, with all the attendant facilities available to cruising sailors. There is also plenty to give historical context and to whet the appetite for visits and exploration ashore. Plans have been updated throughout. Numerous photographs help to orientate, inform and inspire, including a new set of images for the Italian coast and Venice lagoon.

For occasional charterers or long-term cruisers alike, Trevor and Dinah Thompson's thorough and comprehensive work should be the first choice of any cruising sailor wanting to make the most of this rich and diverse coastline.

546pp. Hard cover. Full colour.  
978 178979 021 7 8th ed. 2020





## OCEAN PASSAGES AND LANDFALLS

Rod Heikell and  
Andrew O'Grady

*Ocean Passages and Landfalls* is a handbook for world cruisers. It provides invaluable passage-planning information for crossing the oceans, with discussions on climates, seasons, oceanography and the merits of different world cruising routes. The heart of the book is an ocean-by-ocean round-up, and at the beginning of each of these sections is a description of routes, followed by information on the countries relevant to these routes. Details of formalities and regulations are then followed by essential information on key harbours and landfalls.

This third edition has been thoroughly revised and includes sections on chosen areas and topics - the Atlantic Circuit or Cruising on Ice, for instance. The opportunity has been taken to provide more informal commentary and observations based on first-hand experience. These sections are illustrated by the authors' colour photographs from far-flung parts of the oceans including the South Pacific and the Torres Strait, Brazil and the high latitudes of Chile.

As an up-to-date reference for world cruising this new edition of *Ocean Passages and Landfalls* sets the benchmark as both a practical reference and also as a book for dreamers.

A4. 416 pp. Hard cover. Full colour  
978 178679 302 7 3rd ed. 2022



## THE RED SEA

Stephen Davies and Elaine Morgan

An essential companion for anyone undertaking a passage up or down the Red Sea and the Gulf of Aden, with approach routes from Oman or Socotra in the south and from Israel or Cyprus in the north. This third edition has been thoroughly updated. Expanded details are included for the ports that have developed their facilities for visiting yachts. A selection of new photographs illustrates the vibrant destinations and stunning land and seascapes of this uniquely rewarding cruising ground.

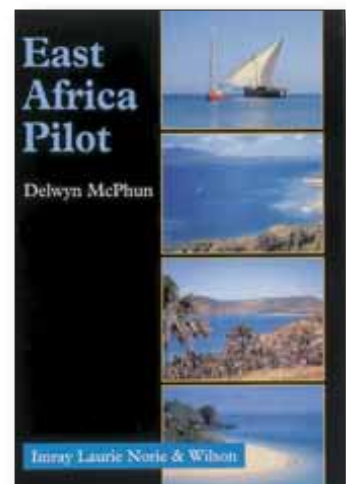
A4. 240 pp. Soft cover. Full colour  
978 184623 940 1 3rd ed. 2022

## THE TRADE WIND FOODIE

Rod and Lucinda Heikell

*The Trade Wind Foodie* is an account of the authors' successive eastbound passages first to the Caribbean and then on through the Panama Canal to the Pacific, Australia and the Indian Ocean. There's plenty of practical advice as well as entertaining asides on the incidents that contributed to the adventure. Throughout, there is a slant towards provisioning, cooking on board and discovering food and restaurants at the numerous landfalls.

A5. 256 pp. Soft cover. Full colour.  
978 184623 502 3 1st ed. 2013



## EAST AFRICA PILOT

Delwyn McPhun

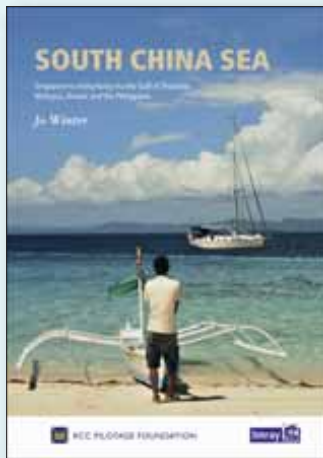
The East African Coast – Kenya, Tanzania, Mozambique and South Africa as far as Durban. The guide also covers Madagascar and the Comoros.

A4. 230 pp. Hard cover. Colour throughout.  
0 85288 251 3 1st ed. 1998





ROYAL CRUISING CLUB  
PILOTAGE FOUNDATION



### SOUTH CHINA SEA

Jo Winter

Singapore to Hong Kong via the Gulf of Thailand, Malaysia, Brunei and the Philippines.

This tome covers thousands of miles of coastline, islands and inland up the many navigable rivers of this beautiful and diverse sailing area

Whether transiting the region or planning a more extended cruise along any of the coastlines bordering the South China Sea, this guide is an essential companion.

A4. 328 pp. Hard cover. Full colour.  
978 184623 186 5 1st ed. 2019

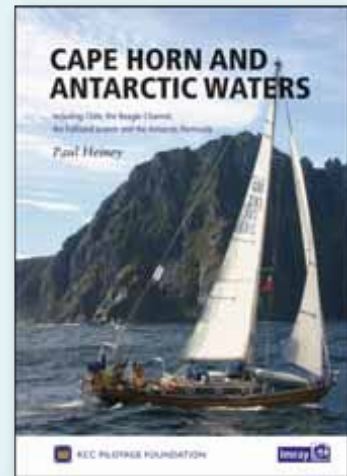
### CAPE HORN AND ANTARCTIC WATERS

including Chile, the Beagle Channel, the Falkland Islands and the Antarctic peninsula

Paul Heiney

This stylish handbook covers the spectacular cruising grounds around Cape Horn and includes some of the most dangerous waters in the world, from the treacherous cape to the icebound anchorages of Antarctica. It offers not only inspiration and encouragement but enough detail to plan the voyage of a lifetime.

A4. 224pp. Hard cover. Full colour.  
978 184623 836 9 1st ed. 2017



### CHILE

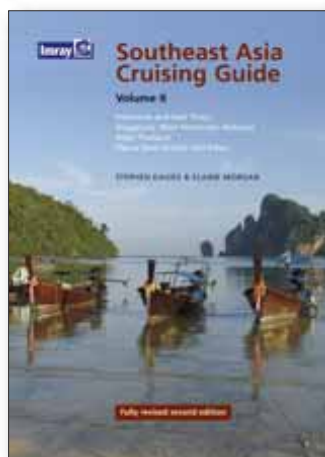
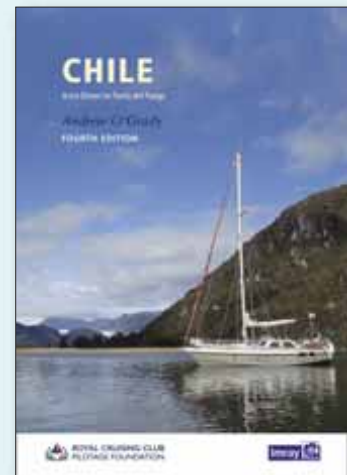
Arica Desert to Tierra del Fuego

Andrew O'Grady

This guide to Chile covers the coasts from Arica in the north to Cape Horn in the south, and includes Isla de Pascua and Islas Juan Fernandez to the west.

This fourth edition has been re-structured to improve the coverage of the intricate waterways of the Chonos Archipelago.

A4. 280 pp. Soft cover.  
978 178679 020 0 4th ed. 2019



### SOUTHEAST ASIA CRUISING GUIDE Volume II: Indonesia and East Timor, Singapore, West Peninsular Malaysia, West Thailand, Papua New Guinea and Palau

The only guide that covers the entire length and breadth of a region frequently visited by round-the-world sailors.

This edition concentrates on the most-frequented routes and includes the most popular stops. There are hundreds of possible anchorages, brief details of the most popular are usefully summarised in tables.

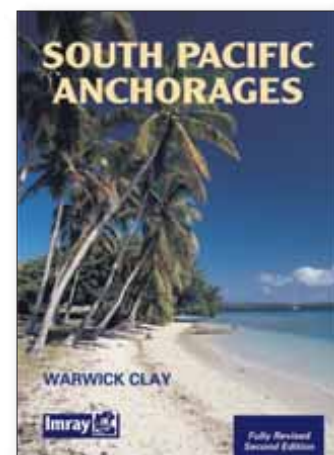
A4. 264 pp. Hard cover. Full colour.  
978 184623 042 4 2nd ed. 2008

### SOUTH PACIFIC ANCHORAGES

Warwick Clay

Details of harbours and anchorages in the Pacific south of the equator between New Guinea and South America. Fully revised.

A4. 280 pp. Soft cover. Monochrome  
0 85281 476 3 2nd ed. 2004





**NEW**

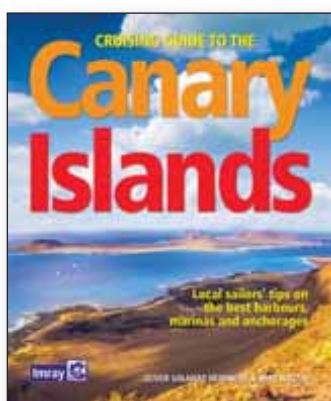
## ATLANTIC ISLANDS

Bermuda, Azores, Madeira Group, Canary Islands and Cape Verdes

Anne Hammick, Hilary Keatinge, Linda Lane-Thornton

A long-established cruising guide from the Royal Cruising Club Pilotage Foundation to the five island groups of the North Atlantic, commonly visited by those sailing the popular Atlantic crossing routes but increasingly enjoyed as cruising destinations in their own right. From the sun-baked lagoons of Bemuda to the verdant slopes of the Azores and Madeira, from the fiery landscapes of the Canaries to the less visited coastlines of the Cape Verdes, this seventh edition has thoroughly updated text and plans and is illustrated with numerous new photographs.

A4. 452pp. Hard cover. Full colour.  
978 178970 070 5 7th edition 2021



## CRUISING GUIDE TO THE CANARY ISLANDS

Oliver Solanas Heinrichs and Mike Westin

This lively cruising guide offers a useful combination of cruising information, Imray chartlets, sightseeing recommendations and tips from local sailors about the beautiful islands of this Spanish archipelago.

200 x 240mm. 186 pp. Soft cover. Full colour.  
978 184623 847 5 1st ed. 2017

## GRENADA TO THE VIRGIN ISLANDS

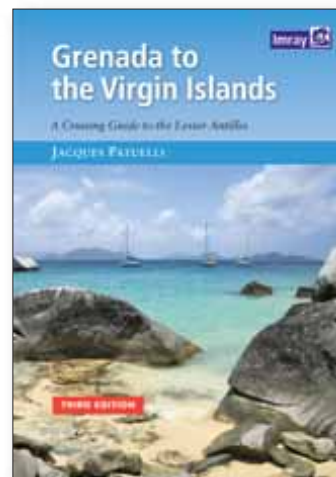
A Cruising Guide to the Lesser Antilles

Jacques Patuelli

This popular book covering the Caribbean from Grenada and Barbados to the Virgin Islands deals with each island in detail. Pilotage notes are followed by tourist information and the usual data on formalities and facilities.

Fully illustrated with plans and photos, the guide is packed with interesting and useful background information on the Caribbean; its history, tourism, geography. The last section is a directory of facilities, restaurants, bars, hotels and other information of interest to tourists.

A4. 300 pp. Soft Cover. Full colour.  
978 184623 581 8 3rd ed. 2015



## WATERWAY GUIDE CUBA

Addison Chan

*Waterway Guide Cuba* includes detailed navigation, anchorages, Goin' Ashore information, over 120 charts plus bonus sections on the Florida Keys and Bahamas are included in this new 350+ page guide.

Co-authored by Addison Chan, it contains chart designs by Imray and contributions from Nigel Calder. Imray manage European sales and distribution.

267 x 207mm. 384 pp. Spiral bound.  
Soft cover. Full colour  
978 099858 634 2 2nd ed. 2019



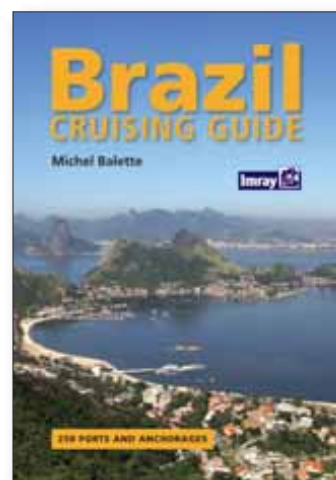
## BRAZIL CRUISING GUIDE

Michel Balette

Originally published in France, this cruising guide to Brazil has been produced to the same high standards as Imray's major pilot books.

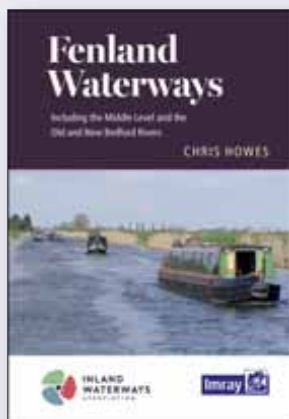
Fully illustrated with charts and colour photographs.

A4. 300 pp. Hard cover. Full colour  
978 184623 201 5 1st ed. 2010





## Inland Waterways Association Guides



These popular Imray inland waterways guides have been revised with experienced boat-owners and navigators from the Inland Waterways Association. Completely redesigned with maps that have been updated and reoriented to make them more user-friendly.

### FENLAND WATERWAYS

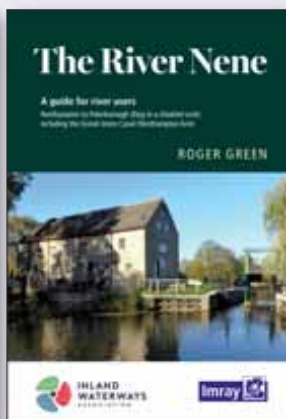
Chris Howes

This guide to the Middle Level waterways that lie between the River Great Ouse and River Nene, including the main link route via March and several other alternatives, gives all the information needed for anyone planning to navigate the area.

Readers will find a wealth of information about moorings, facilities and services, as well as features of interest to canoeists, paddleboarders, walkers and other users of the waterways. It includes detailed mapping for each section of the rivers as well as overview plans.

This new Fenland Waterways guide has been written by Chris Howes, Deputy National Chairman, Eastern Region Chairman and Peterborough Branch Chairman of the IWA.

235 x 160mm. 112 pp.  
Spiral bound. Full colour  
978 178679 148 1 1st edition 2020



### THE RIVER NENE

Chris Howes

Restructured to start at the head of navigation at Kempston, upstream of Bedford, this guide takes you downstream along the full length of the navigable River Great Ouse and then up its accessible river tributaries. This edition has been expanded to include an extra 60 miles of navigable waterways not previously detailed, including the tidal section to Kings Lynn and gems such as the Cambridge Backs World Heritage site.

For anyone planning to explore these waterways, this is your invaluable, don't-leave-home-without-it guide.

234 x 160mm.  
Spiral bound. Full colour.  
978 178679 246 4 1st edition 2021

### THE RIVER GREAT OUSE AND ITS TRIBUTARIES

Roger Green

This guide covers the River Nene from Blisworth to the Wash including Dog in a Doublet sluice below Peterborough. Clear mapping supports navigation notes, commentary and information researched by Roger Green. Includes the Grand Union Canal Northampton Arm.

156 x 234mm. 208 pp.  
Spiral bound. Full colour.  
978 178679 163 4 1st edition 2020



NEW



NEW

### THE RIVER THAMES BOOK

Including the River Wey, Basingstoke Canal and Kennet & Avon Canal

Chris Cove-Smith

*The River Thames Book* is the best selling guide to the non-tidal Thames from Teddington to its source in Gloucestershire and over its lifetime has sold in thousands to boaters, hire cruisers and other users of the rivers.

Chris Cove-Smith's text describes the navigation with the support of clear and detailed mapping. *The River Thames Book* also lists in exhaustive detail the facilities to be found along each section of the navigation. In full colour, it is the best selling handbook to England's greatest river.

A5. 220 pp. Spiral bound soft cover. Full colour.  
978 178679 184 9 8th ed. 2022



### NAVIGATING THE THAMES THROUGH CENTRAL LONDON

Rules, hazards, distances, and places between Margaret Ness and Putney Bridge

Robert Ludlow

This small book is intended principally as a help to leisure boaters who are not familiar with the Thames through central London.

The book provides general information and advice, and in passing, mentions local rules which will be relevant. It lists many places the names of which you might read or hear on the radio and outlines the types of hazard you will encounter as you make your way up river on a fold-out chart

246 x 189mm. Full colour. Spiral bound  
978 184623 489 7 1st ed. 2012



### INLAND WATERWAYS OF GREAT BRITAIN

Edited by Jane Cumberlidge

The long-running *Inland Waterways of Great Britain* is the only single volume to cover in fine detail all inland navigations in England, Wales and Scotland. This colourful edition also gives information on recently restored waterways and follows progress on others still under restoration.

A4. 300 pp. Hard cover. Full colour.  
With folded waterways map.  
978 184623 010 3 8th ed. 2009



## INLAND WATERWAYS OF FRANCE

David Edwards-May

The ninth edition of Inland Waterways of France is the ideal guide for planning cruises in and through the most fascinating and diverse waterway network in Europe. It includes all of the navigable rivers and canals, with maps, distance tables, practical information giving a general view of the geography or each waterway as well as a detailed cockpit reference.

**NEW**

This edition takes a new paperback format, split into three volumes.

### Volume 1– North and Centre

From the English Channel through Northern France, Picardy and Paris to Central France and Burgundy.

A4. 202 pp. Full colour. Soft cover.  
978178679 304 1 9th ed. 2021

### Volume 2 – Northeast and Southeast

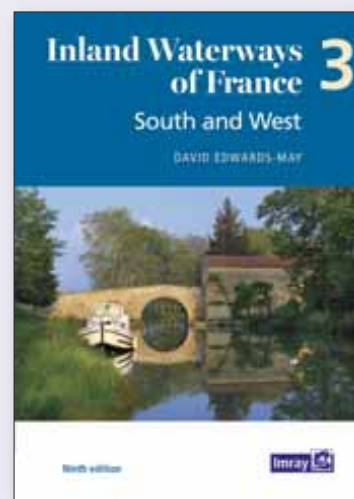
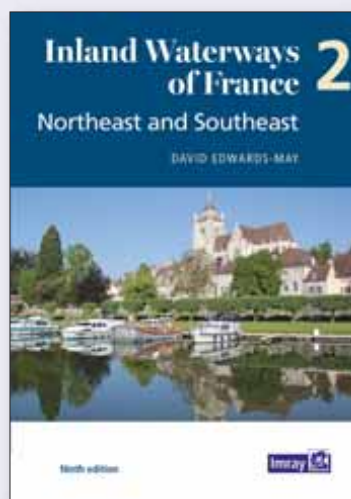
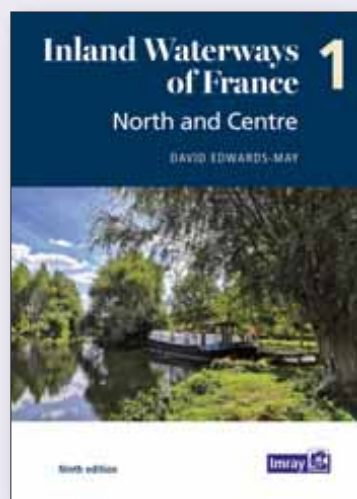
From the northeast – the cross-border rivers Meuse, Moselle, Sarre and Rhine – to the Mediterranean.

A4. 128 pp. Full colour. Soft cover.  
978 178679 306 5 9th ed. 2021

### Volume 3 – South and West

The waterways extending throughout the South ('Midi'), Southwest and Western France.

A4. 154 pp. Full colour. Soft cover.  
978 178679 308 9 9th ed. 2021



## INLAND WATERWAYS OF BELGIUM

Jacqueline Jones

Jacqueline Jones's waterway-by-waterway guide provides all the essential information for navigation, as well as details about things to do and places to see in Belgium's historic cities. Fully illustrated with clear maps and the author's photography, this book is a must for anyone cruising Belgium or en route to the French or Dutch canals. Includes a folded map of the Belgian Waterways system.

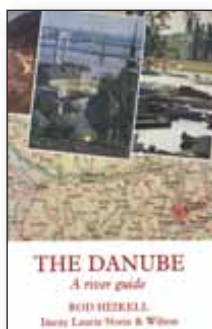
A4. 170 pp. Soft cover. Full colour. Folded map.  
978 085288 760 8 1st ed. 2005

## THE DANUBE – A RIVER GUIDE

Rod Heikell

This compendium of information and detailed guide covers the Danube from Bavaria to the Black Sea. The Danube is illustrated with plans and photographs.

A5. 200 pp. Soft cover. Monochrome.  
978 085288 147 7  
1st ed. 1991



## WATERWAYS OF THE NETHERLANDS

Louise Busby and David Broad

With 6,000km of navigable waterways, the Netherlands offers one of the most extensive yet compact cruising grounds in Europe. This is a user's guide to the whole network, covering all the mast-up routes and excluding only those waterways which offer less than 3-5m bridge height. Navigational details are provided for each waterway, comprising dimensions, obstacles to be expected, and service arrangements for bridges and locks. This is followed by details of over 300 stopping places across all 12 provinces.

A4. 285 pp. Soft cover. Full cover.  
978 184623 748 5 2nd ed. 2016

## INLAND WATERWAYS OF GERMANY

Barry Sheffield with revisions by Catherine & John Best and Robert Thomas

This is the only comprehensive directory to the entire navigable German waterway system available in English. Each river and canal is described in detail and supported by a table of distances indicating locks, bridges, mooring places and other features. The text is supported by small scale mapping and colour photographs. Catherine and John Best have completely recompiled many of the original tables, brought information up to date and supplied excellent new photographs. Robert Thomas has contributed a more general update, in particular to the introductory sections.

A4. 184 pp. Soft cover. Full colour.  
978 184623 463 7 Revised 1st ed. 2016



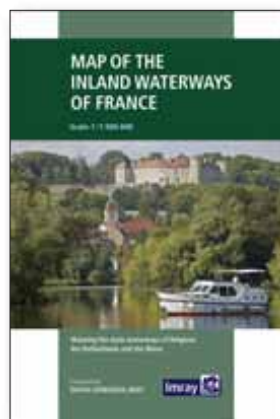
## EUROPEAN WATERWAYS MAP AND DIRECTORY

David Edwards-May

A map and directory designed as a first source of information when planning a trip on the waterways of Europe. The directory describes the waterway network country by country and provides a mass of information of value to all those who are interested in inland navigation as a mode of transport, but also, for a growing number of enthusiasts - a way of life. It includes many photos and larger-scale maps.

The double sided map covers from Ireland and Portugal to the Caspian Sea and, on the other side, a significantly enhanced map covering the denser part of the network, from Dublin to Bratislava on the Danube.

Soft cover. Full colour  
979 109442 900 6 6th ed. 2021



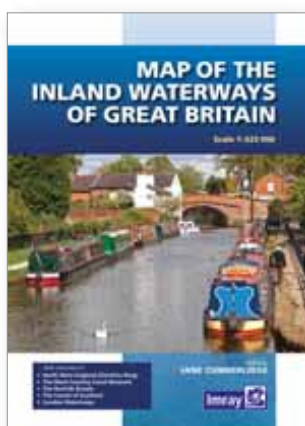
## MAP OF THE INLAND WATERWAYS OF FRANCE

David Edwards-May

Imray's map of the French inland waterway system is the essential reference for planning a visit to France by boat. Compiled by David Edwards-May, the leading authority on world canals and waterways.

The cartography presents essential information concerning distances and covers the Low Countries and the western part of Germany plus large scale insets of the Paris region and northeast France.

1:1,500,000 Folded in cover.  
978 178679 064 4 3rd ed. 2019



## MAP OF THE INLAND WATERWAYS OF GREAT BRITAIN

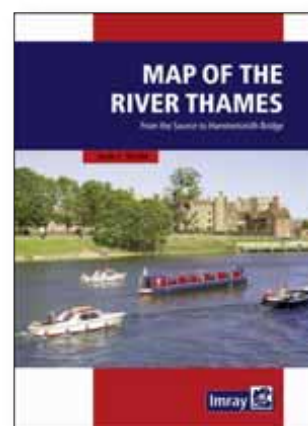
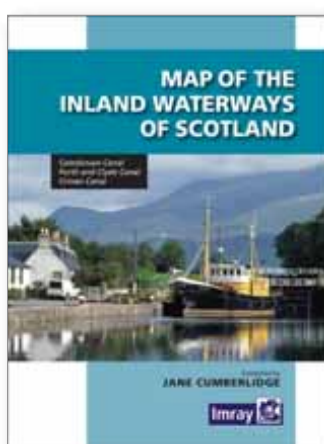
The Imray map has been the standard reference to the waterways system for nearly 50 years and this completely new full colour edition has been improved by the addition of more background topographical information, in particular the road, rail network and high land.

1:625 000 folded in cover.  
978 184623 827 7 updated to 2018

## MAP OF THE INLAND WATERWAYS OF SCOTLAND

This is a comprehensive reference to the Scottish waterways and is embellished by the usual notes on dimensions, restrictions and formalities. On the reverse side, Jane Cumberlidge, who edited the map, has written interesting notes on the background and history of the waterways and also gives some indication of places to see and visit that will be useful for Scottish waterway enthusiasts.

Various scales. Folded in cover.  
978 184623 522 1 2nd ed. 2013



## MAP OF THE RIVER THAMES

The second edition of this popular map of the non-tidal Thames from its source above Cricklade to the entrance of the Grand Union Canal at Brentford below Teddington Locks has been fully revised.

The map has been redesigned as a folded strip map which will be convenient in any cockpit. It is the ideal companion to Chris Cove-Smith's *River Thames Book*. Full information on boating facilities is included in the mapping, as are all the essential details on restricting dimensions, locks and bridges. Also shown are pubs, the Thames Path and other features of special interest.

1:50 000 Folded in cover 978 184623 237 4 2020

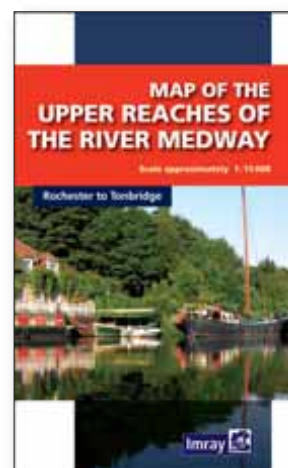
## MAP OF THE UPPER REACHES OF THE RIVER MEDWAY

Rochester to Tonbridge

First published in the 1950s Imray's map of the river above Rochester has always been popular with boaters. There is no other large scale map of the non-tidal section of the Medway above Allington Lock.

The content has been revised and notes and photographs added by Dave Wise whose experience of navigating the river is as a canoeist.

1:15 000 approx. 1000 x 484mm.  
Folded to 510 x 174mm.  
978 184623 452 1 1st ed. 2012

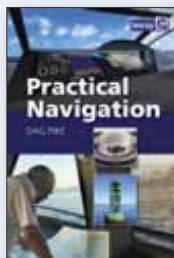




## PRACTICAL NAVIGATION

Dag Pike

This comprehensive and authoritative guide to practical navigation draws on the author's extensive experience of leisure cruising and ocean racing. It combines detailed directions on navigation along coasts, in harbours, at night and in bad weather with easy-to-understand technical information about the electronic tools involved in safe navigation, including radar, GPS, AIS and chart plotters.



156mm x 234mm.  
152 pp. Soft cover.  
Full colour.  
978 184623 681 5 1st ed.  
2015

## BAKER'S POSITION LINE CHART

For plotting a vessel's position to a tenth of a mile.

978 085288 021 0 1978

## OCEAN PLOTTING SHEETS - NORTHERN HEMISPHERE

Stokey Woodall

A pad of 50 plotting sheets for the Northern Hemisphere.

978 184623 829 1

## OCEAN PLOTTING SHEETS - SOUTHERN HEMISPHERE

Stokey Woodall

A pad of 50 plotting sheets for the Southern Hemisphere.

978 184623 830 7



## PLOTTING SHEETS AND SIGHT FORMS FOR YACHTSMEN

Designed by Rod McCallum

25 x A3 sheets to a pad.  
978 085288 123 1

## NAVIGATOR'S LOG BOOK

50 loose-leaf pages in a strong PVC cover. With pencil.

978 085288 124 8

## REFILLS FOR LOG BOOK

50 pages.

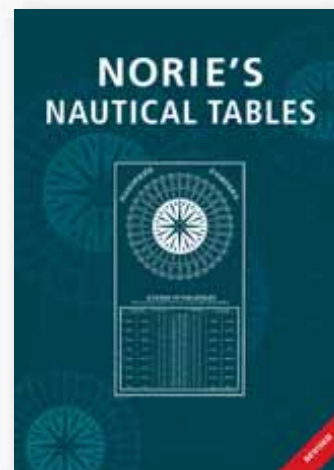
978 085288 125 5

## NORIE'S NAUTICAL TABLES

Edited by Captain A G Blance

This famous set of mathematical tables was first published in 1803. It has been a bestseller ever since, and despite developments in electronic navigation it remains an essential requirement for anyone learning and practising astro-navigation. The editor George Blance modernised the tables in 2007 and this 2018 edition has a completely updated list of Ports of the World

A4. 570 pp. Hard Cover.  
978 178679 038 5 2nd edition 2018



## HIDDEN HARBOURS OF SOUTHWEST SCOTLAND

Dag Pike

A lively tour of small and infrequently visited harbours on the stunning southwest Scottish coast and its nearby islands, starting from Port Logan in the south and meandering northwards to Lerags on Loch Feochan in the Firth of Lorn.

250mm x 210mm. 80 pp. Soft cover. Full colour  
978 184623 702 7 1st ed 2015



## HIDDEN HARBOURS OF SOUTHWEST BRITAIN

Dag Pike

A tour of over 30 minor harbours around the southwest coast of the British Isles from Lyme Bay to the River Severn. Illustrated with evocative colour photography, Dag Pike's narrative brings to life a contrasting collection of small historic harbours which, although infrequently visited, have a fascinating story to tell.

250mm x 210mm. 64 pp. Soft cover. Full colour  
978 184623 204 6 1st ed 2010



## HIDDEN HARBOURS OF WALES

Dag Pike

*Hidden Harbours of Wales* is a tour of small and infrequently visited harbours on the Welsh coast, starting from Lydney on the River Severn and finishing a world away at Connah's Quay on the River Dee on the north coast.

250mm x 210mm. 64 pp. Soft cover. Full colour.  
978 184623 373 9 1st ed 2011



## HIDDEN HARBOURS OF THE NORTHWEST

Dag Pike

This volume covers over 40 ports from Chester, on the River Dee in the south to Port William in the north.

250mm x 210mm. 92 pp. Soft cover. Full colour  
978 184623 504 7 1st ed 2013





## About the Catalogue

For charts, see pages 1–15

For apps, see page 16

For Explore, see page 17

For books, see pages 18–36

Our Catalogue is designed to be used in conjunction with the Imray Stock List and Order Form which is published twice a year and gives details of prices and current information on publication dates.

The Stock List announces new titles as they become available during the season. It also lists publications that we distribute from other publishers including Seaworthy in the United States, the RYA and Adlard Coles Nautical. In particular more general titles and narratives from other publishers which are not listed in this catalogue appear in the Stock List.

Charts for other international hydrographic offices can be supplied on request.

Full details of these and changes to our list during the year are at [www.imray.com](http://www.imray.com)

Correct to November 2021

Details are subject to alteration

See Stock List for prices

## Imray digital charts for plotters

Imray charts are available for electronic charting systems. Various publishers also offer navigation packages for use on Android apps and PCs.



Raymarine  
**Including chart set ID1 Great Britain and Ireland**

Meridian Chartware  
[www.meridian-chartware.co.uk](http://www.meridian-chartware.co.uk)

Stentec Software  
[www.stentec.com](http://www.stentec.com)

Open CPN  
[www.o-charts.org](http://www.o-charts.org)

Imray lolaire chart content for the Caribbean Sea is also included in vector charting from Navionics, Garmin, CMAP and others.

# YouTube **IMRAY CHANNEL**



Subscribe to our YouTube channel to see videos with Imray authors, 'how to' guides for our apps and other information around the world of Imray.



## **IMRAY PODCASTS**

A series of podcasts by broadcaster Ceri Hurford Jones with authors of Imray cruising guides and other experts provide cruising inspiration and information. Available on Spotify, Apple Podcasts and more.

Follow us on social media and sign up to our newsletter at [www.imray.com](http://www.imray.com) for more information.



@imraynautical

**Imray Laurie Norie & Wilson Ltd**

Wych House The Broadway  
St Ives, Cambridgeshire PE27 5BT England  
☎ +44 (0)1480 462114